

PRODUCT CATALOGUE

AUGUST 2024



WELCOME TO LUMEN PLUS

At Lumen Plus, we're passionate about illuminating your world with innovative, high-quality LED lighting solutions. Our mission is to provide energy-efficient, eco-friendly, and stylish lighting products that enhance your daily life.

Lumen Plus is founded on the principles of innovation, sustainability, and excellence. Our tight-knit team is dedicated to sourcing and manufacturing LED lighting products that exceed industry standards and customer expectations. Our principles:

- **Trust:** Building strong relationships with our customers and partners.
- **Integrity:** Operating with honesty, transparency, and ethical practices.
- **Quality:** Ensuring exceptional performance and durability in every product.
- **Innovation:** Staying ahead of the curve with cutting-edge technology and design.

We have an in-house production & assembly unit which helps us deliver quality products after thoroughly testing them against multiple parameters.

Our Promise, at Lumen Plus is to deliver:

- High-quality LED lighting products that meet global standards.
- Innovative solutions for residential, commercial, and industrial applications.
- Environmentally responsible products that reduce carbon footprint.
- Unparalleled customer service and support from our family to yours.

JOIN THE LUMEN PLUS FAMILY

Experience the future of lighting with us. Explore our range of LED lighting products and discover a brighter, more sustainable way to illuminate your world.

INDEX

Master Magnetic Tracks	-	Pg 1 - 5
Microline Magnetic Tracks	-	Pg 6 - 9
Down Lights	-	Pg 10 - 11
COB Lights	-	Pg 12 - 20
Track Lights	-	Pg 20
Lazer Blade	-	Pg 21 - 22
Surface Lights	-	Pg 23 - 24
Foot Lights	-	Pg 24
Outdoor Wall Lights	-	Pg 25 - 27
Spike Lights	-	Pg 27
Wall Washers	-	Pg 27
LED Strip Lights	-	Pg 28 - 30
SMPS	-	Pg 30 - 31
Rope Lights	-	Pg 32
Controllers	-	Pg 32
Silicon Flex	-	Pg 33 - 34
Aluminium Profiles	-	Pg 34 - 38
Flood & Highbay Lights	-	Pg 38
Sensors	-	Pg 39

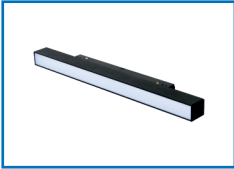
25MM MASTER MAGNETIC TRACKS

MASTER MAGNETIC - RF DIMMABLE + TUNABLE LIGHTS

*PRICES MENTIONED ARE WITHOUT 48V DC DRIVERS

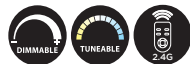
*STANDARD LUMEN OUTPUT : 80 LUMEN / WATT

01



LPMTL001RFI (10W) | DC 48V
LINEAR DIFFUSED LIGHT

LED: BRIDGELUX | CRI > 90 | BEAM ANGLE: 100°
BODY SIZE (MM): 307(L)* 22(B)* 38(H)
BODY COLOUR: BLACK | BODY: ALUMINIUM
CCT: 2700K - 6000K | WARRANTY: 2 YEARS
MRP: ₹ XXXX /-



02



LPMTL001RFI (20W) | DC 48V
LINEAR DIFFUSED LIGHT

LED: BRIDGELUX | CRI > 90 | BEAM ANGLE: 100°
BODY SIZE (MM): 607(L)* 22(B)* 38(H)
BODY COLOUR: BLACK | BODY: ALUMINIUM
CCT: 2700K - 6000K | WARRANTY: 2 YEARS
MRP: ₹ XXXX /-



03



LPMTL001RFI (30W) | DC 48V
LINEAR DIFFUSED LIGHT

LED: BRIDGELUX | CRI > 90 | BEAM ANGLE: 100°
BODY SIZE (MM): 907(L)* 22(B)* 38(H)
BODY COLOUR: BLACK | BODY: ALUMINIUM
CCT: 2700K - 6000K | WARRANTY: 2 YEARS
MRP: ₹ XXXX /-



04



LPMTL001RFI (6W) | DC 48V
LINEAR FIXED SPOT LIGHT

LED: BRIDGELUX | CRI > 90 | BEAM ANGLE: 36°
BODY SIZE (MM): 115(L)* 22(B)* 38(H)
BODY COLOUR: BLACK | BODY: ALUMINIUM
CCT: 2700K - 6000K | WARRANTY: 2 YEARS
MRP: ₹ XXXX /-



05



LPMTL001RFI (12W) | DC 48V
LINEAR FIXED SPOT LIGHT

LED: BRIDGELUX | CRI > 90 | BEAM ANGLE: 36°
BODY SIZE (MM): 223(L)* 22(B)* 38(H)
BODY COLOUR: BLACK | BODY: ALUMINIUM
CCT: 2700K - 6000K | WARRANTY: 2 YEARS
MRP: ₹ XXXX /-



06



LPMTL001RFI (18W) | DC 48V
LINEAR FIXED SPOT LIGHT

LED: BRIDGELUX | CRI > 90 | BEAM ANGLE: 36°
BODY SIZE (MM): 331(L)* 22(B)* 38(H)
BODY COLOUR: BLACK | BODY: ALUMINIUM
CCT: 2700K - 6000K | WARRANTY: 2 YEARS
MRP: ₹ XXXX /-



07

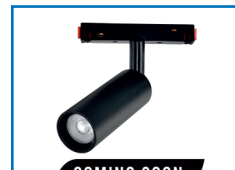


LPMTL002RFI (10W) | DC 48V
TRACK LIGHT

LED: BRIDGELUX | CRI > 90 | BEAM ANGLE: 24°
BODY SIZE (MM): 48(L)* 105(B)
BODY COLOUR: BLACK | BODY: ALUMINIUM
CCT: 2700K - 6000K | WARRANTY: 2 YEARS
MRP: ₹ XXXX /-



08



LPMTL002RFI (20W) | DC 48V
TRACK LIGHT

LED: BRIDGELUX | CRI > 90 | BEAM ANGLE: 36°
BODY SIZE (MM): 58(L)* 155(B)
BODY COLOUR: BLACK | BODY: ALUMINIUM
CCT: 2700K - 6000K | WARRANTY: 2 YEARS
MRP: ₹ XXXX /-



09



LPMTL003RFI (6W) | DC 48V
LINEAR TILTABLE SPOT LIGHT

LED: BRIDGELUX | CRI > 90 | BEAM ANGLE: 36°
BODY SIZE (MM): 110(L)* 22(B)* 80(H)
BODY COLOUR: BLACK | BODY: ALUMINIUM
CCT: 2700K - 6000K | WARRANTY: 2 YEARS
MRP: ₹ XXXX /-



10



LPMTL003RFI (12W) | DC 48V
LINEAR TILTABLE SPOT LIGHT

LED: BRIDGELUX | CRI > 90 | BEAM ANGLE: 36°
BODY SIZE (MM): 220(L)* 22(B)* 80(H)
BODY COLOUR: BLACK | BODY: ALUMINIUM
CCT: 2700K - 6000K | WARRANTY: 2 YEARS
MRP: ₹ XXXX /-



11

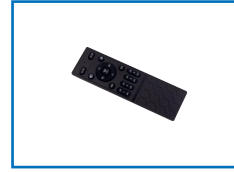


**LPMTPS200RFI (200W) | DC 48V
RF DIMMABLE + TUNABLE
MAGNETIC SMPS**

BODY SIZE (MM): 280(L)* 22(B)* 43.5(H)
BODY COLOUR: BLACK | BODY: ALUMINIUM
WARRANTY: 2 YEARS
MRP: ₹ XXXX /-



12



**LPMTAC RF REMOTE
RF DIMMABLE + TUNABLE
MAGNETIC REMOTE**

BODY COLOUR: BLACK
WARRANTY: 1 YEARS
MRP: ₹ XXXX /-

MASTER MAGNETIC LIGHTS - STANDARD

*PRICES MENTIONED ARE WITHOUT 48V DC DRIVES

*STANDARD LUMEN OUTPUT : 90 LUMEN / WATT

13



**LPMTLD001 (12W) | DC 48V
LINEAR DIFFUSED LIGHT**

LED: BRIDGELUX | CRI > 90 | BEAM ANGLE: 100°
BODY SIZE (MM): 300(L)* 22(B)* 38(H)
BODY COLOUR: BLACK | BODY: ALUMINIUM
CCT: 3K (WW) / 4K (NW) | WARRANTY: 2 YEARS
MRP: ₹ XXXX /-

14



**LPMTLD001 (24W) | DC 48V
LINEAR DIFFUSED LIGHT**

LED: BRIDGELUX | CRI > 90 | BEAM ANGLE: 100°
BODY SIZE (MM): 600(L)* 22(B)* 38(H)
BODY COLOUR: BLACK | BODY: ALUMINIUM
CCT: 3K (WW) / 4K (NW) | WARRANTY: 2 YEARS
MRP: ₹ XXXX /-

15



**LPMTLD001 (36W) | DC 48V
LINEAR DIFFUSED LIGHT**

LED: BRIDGELUX | CRI > 90 | BEAM ANGLE: 100°
BODY SIZE (MM): 900(L)* 22(B)* 38(H)
BODY COLOUR: BLACK | BODY: ALUMINIUM
CCT: 3K (WW) / 4K (NW) | WARRANTY: 2 YEARS
MRP: ₹ XXXX /-

16



**LPMTLS001 (6W) | DC 48V
LINEAR FIXED SPOT LIGHT**

LED: BRIDGELUX | CRI > 90 | BEAM ANGLE: 36°
BODY SIZE (MM): 110(L)* 22(B)* 38(H)
BODY COLOUR: BLACK | BODY: ALUMINIUM
CCT: 3K (WW) / 4K (NW) | WARRANTY: 2 YEARS
MRP: ₹ XXXX /-



17



**LPMTLS001 (12W) | DC 48V
LINEAR FIXED SPOT LIGHT**

LED: BRIDGELUX | CRI > 90 | BEAM ANGLE: 36°
BODY SIZE (MM): 220(L)* 22(B)* 38(H)
BODY COLOUR: BLACK | BODY: ALUMINIUM
CCT: 3K (WW) / 4K (NW) | WARRANTY: 2 YEARS
MRP: ₹ XXXX /-



18



**LPMTLS001 (18W) | DC 48V
LINEAR FIXED SPOT LIGHT**

LED: BRIDGELUX | CRI > 90 | BEAM ANGLE: 36°
BODY SIZE (MM): 325(L)* 22(B)* 38(H)
BODY COLOUR: BLACK | BODY: ALUMINIUM
CCT: 3K (WW) / 4K (NW) | WARRANTY: 2 YEARS
MRP: ₹ XXXX /-



19



**LPMTTL001 (6W) | DC 48V
LINEAR TILTTABLE SPOT LIGHT**

LED: BRIDGELUX | CRI > 90 | BEAM ANGLE: 36°
BODY SIZE (MM): 110(L)* 22(B)* 55(H)
BODY COLOUR: BLACK | BODY: ALUMINIUM
CCT: 3K (WW) / 4K (NW) | WARRANTY: 2 YEARS
MRP: ₹ XXXX /-



20



**LPMTTL001 (12W) | DC 48V
LINEAR TILTTABLE SPOT LIGHT**

LED: BRIDGELUX | CRI > 90 | BEAM ANGLE: 36°
BODY SIZE (MM): 220(L)* 22(B)* 55(H)
BODY COLOUR: BLACK | BODY: ALUMINIUM
CCT: 3K (WW) / 4K (NW) | WARRANTY: 2 YEARS
MRP: ₹ XXXX /-



21



**LPMTTL001 (18W) | DC 48V
LINEAR TILTTABLE SPOT LIGHT**

LED: BRIDGELUX | CRI > 90 | BEAM ANGLE: 36°
BODY SIZE (MM): 325(L)* 22(B)* 55(H)
BODY COLOUR: BLACK | BODY: ALUMINIUM
CCT: 3K (WW) / 4K (NW) | WARRANTY: 2 YEARS
MRP: ₹ XXXX /-



22



**LPMTTL002 (7W) | DC 48V
TRACK SPOT LIGHT**

LED: BRIDGELUX | CRI > 90 | BEAM ANGLE: 24°
BODY SIZE (MM): 38(L)* 70(B)
BODY COLOUR: BLACK | BODY: ALUMINIUM
CCT: 3K (WW) / 4K (NW) | WARRANTY: 2 YEARS
MRP: ₹ XXXX /-



23



**LPMTT002 (12W) | DC 48V
TRACK SPOT LIGHT**

LED: BRIDGELUX | CRI > 90 | BEAM ANGLE: 24°
BODY SIZE (MM): 45(L)* 100(B)
BODY COLOUR: BLACK | BODY: ALUMINIUM
CCT: 3K (WW) / 4K (NW) | WARRANTY: 2 YEARS
MRP: ₹ XXXX /-



24



**LPMTT002 (20W) | DC 48V
TRACK SPOT LIGHT**

LED: BRIDGELUX | CRI > 90 | BEAM ANGLE: 24°
BODY SIZE (MM): 55(L)* 120(B)
BODY COLOUR: BLACK | BODY: ALUMINIUM
CCT: 3K (WW) / 4K (NW) | WARRANTY: 2 YEARS
MRP: ₹ XXXX /-



25



**LPMTT003 (6W) | DC 48V
LINEAR TILTTABLE SPOT LIGHT**

LED: BRIDGELUX | CRI > 90 | BEAM ANGLE: 36°
BODY SIZE (MM): 45(L)* 100(B)
BODY COLOUR: BLACK | BODY: ALUMINIUM
CCT: 3K (WW) / 4K (NW) | WARRANTY: 2 YEARS
MRP: ₹ XXXX /-



26



**LPMTT003 (12W) | DC 48V
LINEAR TILTTABLE SPOT LIGHT**

LED: BRIDGELUX | CRI > 90 | BEAM ANGLE: 36°
BODY SIZE (MM): 110(L)* 22(B)* 80(H)
BODY COLOUR: BLACK | BODY: ALUMINIUM
CCT: 3K (WW) / 4K (NW) | WARRANTY: 2 YEARS
MRP: ₹ XXXX /-



27



**LPMTT003 (18W) | DC 48V
LINEAR TILTTABLE SPOT LIGHT**

LED: BRIDGELUX | CRI > 90 | BEAM ANGLE: 36°
BODY SIZE (MM): 220(L)* 22(B)* 80(H)
BODY COLOUR: BLACK | BODY: ALUMINIUM
CCT: 3K (WW) / 4K (NW) | WARRANTY: 2 YEARS
MRP: ₹ XXXX /-



28



**LPMTT004 (6W) | DC 48V
LINEAR TILTTABLE SPOT LIGHT**

LED: BRIDGELUX | CRI > 90 | BEAM ANGLE: 36°
BODY SIZE (MM): 123(L)* 74.38(B)* 33.67(H)
BODY COLOUR: BLACK | BODY: ALUMINIUM
CCT: 3K (WW) / 4K (NW) | WARRANTY: 2 YEARS
MRP: ₹ XXXX /-



29



**LPMTT004 (12W) | DC 48V
LINEAR TILTTABLE SPOT LIGHT**

LED: BRIDGELUX | CRI > 90 | BEAM ANGLE: 36°
BODY SIZE (MM): 231(L)* 74.38(B)* 33.67(H)
BODY COLOUR: BLACK | BODY: ALUMINIUM
CCT: 3K (WW) / 4K (NW) | WARRANTY: 2 YEARS
MRP: ₹ XXXX /-



30



**LPMTT004 (18W) | DC 48V
LINEAR TILTTABLE SPOT LIGHT**

LED: BRIDGELUX | CRI > 90 | BEAM ANGLE: 36°
BODY SIZE (MM): 354(L)* 74.38(B)* 33.67(H)
BODY COLOUR: BLACK | BODY: ALUMINIUM
CCT: 3K (WW) / 4K (NW) | WARRANTY: 2 YEARS
MRP: ₹ XXXX /-



31



**LPMTH001 (7W) | DC 48V
HANGING LIGHT**

LED: BRIDGELUX | CRI > 90 | BEAM ANGLE: 24°
BODY SIZE (MM): 300(L)* φ36(B)
BODY COLOUR: BLACK | BODY: ALUMINIUM
CCT: 3K (WW) / 4K (NW) | WARRANTY: 2 YEARS
MRP: ₹ XXXX /-



32



**LPMTH001 (12W) | DC 48V
HANGING LIGHT**

LED: BRIDGELUX | CRI > 90 | BEAM ANGLE: 24°
BODY SIZE (MM): 300(L)* φ36(B)
BODY COLOUR: BLACK | BODY: ALUMINIUM
CCT: 3K (WW) / 4K (NW) | WARRANTY: 2 YEARS
MRP: ₹ XXXX /-



33



**LPMTPRO01 (10W) | DC 48V
PROJECTOR TRACK**

LED: BRIDGELUX | CRI > 90
BODY SIZE (MM): XX | BEAM ANGLE: 10°-60°
BODY COLOUR: BLACK | BODY: ALUMINIUM
CCT: 3K (WW) / 4K (NW) | WARRANTY: 2 YEARS
MRP: ₹ XXXX /-



The frame size
can be adjusted



MASTER MAGNETIC TRACK CHANNELS & ACCESSORIES

TYPE A - SURFACE

34



LPMTSS001 (1 METRE)

SURFACE TRACK

BODY SIZE (MM): 1000(L)* 26(B)* 51(H)
BODY COLOUR: BLACK | BODY: ALUMINIUM
MRP: ₹ XXXX /-

35



LPMTSS001 (2 METRE)

SURFACE TRACK

BODY SIZE (MM): 2000(L)* 26(B)* 51(H)
BODY COLOUR: BLACK | BODY: ALUMINIUM
MRP: ₹ XXXX /-

36



LPMTSS001 (3 METRE)

SURFACE TRACK

BODY SIZE (MM): 3000(L)* 26(B)* 51(H)
BODY COLOUR: BLACK | BODY: ALUMINIUM
MRP: ₹ XXXX /-

37



LPMTAC001

HANGING KIT

1.5 MTR WIRE (SET OF 2)
MRP: ₹ XXXX /-

38



LPMTAC002S

I JOINTER

BODY COLOUR: BLACK
MRP: ₹ XXXX /-

39



LPMTAC003

HORIZONTAL CORNER

BODY COLOUR: BLACK | BODY: ALUMINIUM
MRP: ₹ XXXX /-

TYPE B - TRIMLESS

40



LPMTRC001 (1 METRE)

TRIMLESS TRACK

BODY SIZE (MM): 1000(L)* 56(B)* 44(H)
BODY COLOUR: BLACK | BODY: ALUMINIUM
MRP: ₹ XXXX /-

41



LPMTRC001 (2 METRE)

TRIMLESS TRACK

BODY SIZE (MM): 2000(L)* 56(B)* 44(H)
BODY COLOUR: BLACK | BODY: ALUMINIUM
MRP: ₹ XXXX /-

42



LPMTRC001 (3 METRE)

TRIMLESS TRACK

BODY SIZE (MM): 3000(L)* 56(B)* 44(H)
BODY COLOUR: BLACK | BODY: ALUMINIUM
MRP: ₹ XXXX /-

43



LPMTAC005

HORIZONTAL CORNER

BODY COLOUR: BLACK | BODY: ALUMINIUM
MRP: ₹ XXXX /-

TYPE C - RECESSED

44

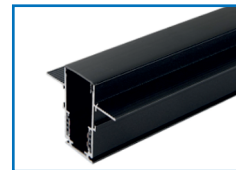


LPMTRR001 (1 METRE)

RECESSED TRACK

BODY SIZE (MM): 1000(L)* 56(B)* 47.6(H)
BODY COLOUR: BLACK | BODY: ALUMINIUM
MRP: ₹ XXXX /-

45



LPMTRR001 (2 METRE)

RECESSED TRACK

BODY SIZE (MM): 2000(L)* 56(B)* 47.6(H)
BODY COLOUR: BLACK | BODY: ALUMINIUM
MRP: ₹ XXXX /-

46

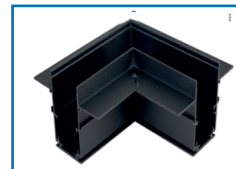


LPMTRR001 (3 METRE)

RECESSED TRACK

BODY SIZE (MM): 3000(L)* 56(B)* 47.6(H)
BODY COLOUR: BLACK | BODY: ALUMINIUM
MRP: ₹ XXXX /-

47



LPMTAC007

HORIZONTAL CORNER

BODY COLOUR: BLACK | BODY: ALUMINIUM
MRP: ₹ XXXX /-

COMMON ACCESSORIES FOR MASTER MAGNETIC TRACK CHANNELS

48



LPMTA

POWER ADAPTOR

BODY SIZE (MM): 100(L)* 500(CL)

BODY COLOUR: BLACK | BODY: ALUMINIUM + PC

MRP: ₹ XXXX /-

49



LPMTSA

STRAIGHT ADAPTOR

BODY SIZE (MM): 200(L)

BODY COLOUR: BLACK | BODY: ALUMINIUM + PC

MRP: ₹ XXXX /-

50



LPMTCA

CORNER ADAPTOR

BODY SIZE (MM): 330(L)* 130(CL)

BODY COLOUR: BLACK | BODY: ALUMINIUM + PC

MRP: ₹ XXXX /-

POWER SUPPLY FOR MASTER MAGNETIC TRACK CHANNELS

51



LPMTPS100W

48V IN-TRACK POWERSPLY

BODY SIZE (MM): 167(L)* 22(B)* 43.5(H)

BODY COLOUR: BLACK | BODY: ALUMINIUM + PC

MRP: ₹ XXXX /-

52



LPMTPS200W

48V IN-TRACK POWERSPLY

BODY SIZE (MM): 247(L)* 22(B)* 43.5(H)



BODY COLOUR: BLACK | BODY: ALUMINIUM + PC

MRP: ₹ XXXX /-








MICROLINE - 5MM MAGNETIC TRACK

MAGNETIC TRACK CHANNELS
*PRICES MENTIONED ARE WITHOUT 24V DC DRIVERS

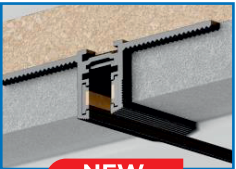

TYPE A - SURFACE / HANGING

<p># 53</p>  <p>NEW</p>	<p>ML-SS-01M (1 METRE) SURFACE TRACK BODY SIZE (MM): 1000(L)* 11(B)* 15(H) BODY COLOUR: BLACK BODY: DIE-CASTING ALUMINUM INPUT : DC24V MRP: ₹ XXXX /-</p>	<p># 54</p>  <p>NEW</p>	<p>ML-SS-02M (2 METRE) SURFACE TRACK BODY SIZE (MM): 2000(L)* 11(B)* 15(H) BODY COLOUR: BLACK BODY: DIE-CASTING ALUMINUM INPUT : DC24V MRP: ₹ XXXX /-</p>
--	---	--	---

TYPE A - SURFACE ACCESSORIES

<p># 55</p>  <p>NEW</p>	<p>ML-SS-300CURVE SURFACE ARC TRACK BODY SIZE (MM): 250(L)* 10(B)* 15(H) BODY COLOUR: BLACK BODY: DIE-CASTING ALUMINUM INPUT : DC24V MRP: ₹ XXXX /-</p>	<p># 56</p>  <p>NEW</p>	<p>ML-SS-600CURVE SURFACE ARC TRACK BODY SIZE (MM): 600 ROUNDED CORNERS BODY COLOUR: BLACK BODY: DIE-CASTING ALUMINUM INPUT : DC24V MRP: ₹ XXXX /-</p>
<p># 57</p>  <p>NEW</p>	<p>ML-SS-900CURVE SURFACE ARC TRACK BODY SIZE (MM): 900 ROUNDED CORNERS BODY COLOUR: BLACK BODY: DIE-CASTING ALUMINUM INPUT : DC24V MRP: ₹ XXXX /-</p>	<p># 58</p>  <p>NEW</p>	<p>ML-SS-1200CURVE SURFACE ARC TRACK BODY SIZE (MM): 1200 ROUNDED CORNERS BODY COLOUR: BLACK BODY: DIE-CASTING ALUMINUM MRP: ₹ XXXX /-</p>
<p># 59</p>  <p>NEW</p>	<p>ML-SS-CJ HORIZONTAL CORNER BODY SIZE (MM): 30(L)* 30(B)* 15(H) BODY COLOUR: BLACK BODY: DIE-CASTING ALUMINUM MRP: ₹ XXXX /-</p>	<p># 60</p>  <p>NEW</p>	<p>ML-SS-JOINTER SURFACE TRACK JOINTER BODY SIZE (MM): 50(B)* 7(H) BODY COLOUR: CHROME BODY: DIE-CASTING ALUMINUM MRP: ₹ XXXX /-</p>
<p># 61</p>  <p>NEW</p>	<p>ML-SS-HGKIT MESSENGER WIRE LENGTH (MM): 2000 BODY COLOUR: CHROME MRP: ₹ XXXX /-</p>		

TYPE B - TRIMLESS (PRE POP)

<p># 62</p>  <p>NEW</p>	<p>ML-RR-01M (PRE POP) (1 METRE) TRIMLESS TRACK BODY SIZE (MM): 1000(L)* 50(B)* 15(H) BODY COLOUR: BLACK BODY: DIE-CASTING ALUMINUM MRP: ₹ XXXX /-</p>	<p># 63</p>  <p>NEW</p>	<p>ML-RR-02M (PRE POP) (2 METRE) TRIMLESS TRACK BODY SIZE (MM): 2000(L)* 50(B)* 15(H) BODY COLOUR: BLACK BODY: DIE-CASTING ALUMINUM MRP: ₹ XXXX /-</p>
--	--	--	--

TYPE B - TRIMLESS (PRE POP) ACCESSORIES

64



NEW

ML-RR-600CURVE (PRE POP)

TRIMLESS ARC TRACK

BODY SIZE (MM): 600 ROUNDED CORNERS
BODY COLOUR: BLACK | BODY: DIE-CASTING
WARRANTY: 3 YEARS
MRP: ₹ XXXX /-

65



NEW

ML-RR-900CURVE (PRE POP)

TRIMLESS ARC TRACK

BODY SIZE (MM): 900 ROUNDED CORNERS
BODY COLOUR: BLACK | BODY: DIE-CASTING
ALUMINUM | WARRANTY: 3 YEARS
MRP: ₹ XXXX /-

66



NEW

ML-RR-1200CURVE (PRE POP)

TRIMLESS ARC TRACK

BODY SIZE (MM): 1200 ROUNDED CORNERS
BODY COLOUR: BLACK | BODY: DIE-CASTING
WARRANTY: 3 YEARS
MRP: ₹ XXXX /-

67



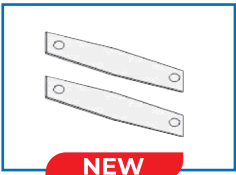
NEW

ML-RR-CJ (PRE POP)

HORIZONTAL CORNER

BODY SIZE (MM): 15(L)* 55(B)*55(H)
BODY COLOUR: BLACK | BODY: DIE-CASTING
ALUMINUM | INPUT : DC24V
MRP: ₹ XXXX /-

68



NEW

ML-RR/RC-JOINTER

RECESSED TRACK JOINTER

BODY SIZE (MM): 50(L)* 7(B)
BODY COLOUR: BLACK | BODY: DIE-CASTING
ALUMINUM | INPUT : DC24V
MRP: ₹ XXXX /-

TYPE C - TRIMLESS (POST POP)

69



NEW

ML-RC-01M (POST POP) (1 METRE)

TRIMLESS TRACK

BODY SIZE (MM): 1000(L)* 50(B)*15(H)
BODY COLOUR: BLACK | BODY: DIE-CASTING
ALUMINUM | INPUT : DC24V | WARRANTY: 3 YEARS
MRP: ₹ XXXX /-

70



NEW

ML-RC-02M (POST POP) (2 METRE)

TRIMLESS TRACK

BODY SIZE (MM): 2000(L)* 50(B)*15(H)
BODY COLOUR: BLACK | BODY: DIE-CASTING
ALUMINUM | INPUT : DC24V | WARRANTY: 3 YEARS
MRP: ₹ XXXX /-

TYPE C - TRIMLESS (POST POP) ACCESSORIES

71



NEW

ML-RC-CJ (POST POP)

HORIZONTAL CORNER

BODY SIZE (MM): 80(L)* 80(B)*15(H)
BODY COLOUR: BLACK | BODY: DIE-CASTING
ALUMINUM
MRP: ₹ XXXX /-

72



NEW

ML-RR/RC-JOINTER

RECESSED TRACK JOINTER

BODY SIZE (MM): 50(L)* 7(B)
BODY COLOUR: BLACK
MRP: ₹ XXXX /-

COMMON ACCESSORIES

73



NEW

ML-AC-PA

POWER ADAPTOR

BODY SIZE (MM): 39(L)* 5(B)* 11(H)
WIRE LENGTH : 1.5 METRE
BODY COLOUR: BLACK | BODY: DIE-CASTING
ALUMINUM+PLASTIC | WARRANTY: 3 YEARS
MRP: ₹ XXXX /-

74



NEW

ML-AC-CA

CORNER ADAPTOR

BODY SIZE (MM): 180(L)* 5(B)* 11(H)
MIDDLE WIRE LENGTH : 7.5 CENTIMETER
BODY COLOUR: BLACK | BODY: DIE-CASTING
ALUMINUM+PLASTIC | WARRANTY: 3 YEARS
MRP: ₹ XXXX /-

75



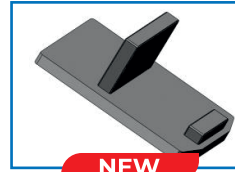
NEW

ML-AC-SA

STRAIGHT ADAPTOR

BODY SIZE (MM): 68(L)* 5(B)* 11(H)
BODY COLOUR: BLACK | BODY: PC
WARRANTY: 3 YEARS
MRP: ₹ XXXX /-

76



NEW

ML-ENDCAP

END CAPS

BODY SIZE (MM): 15(L)* 10(B)
BODY COLOUR: BLACK | BODY: PLASTIC
MRP: ₹ XXXX /-

MICROLINE LIGHTS FLEXIBLE SILICONE STRIP

77



NEW

ML-A-8W | DC 48V
SILICONE LAMP STRIP

LED: CREE | CRI > 90 | BEAM ANGLE: 100°
BODY SIZE (MM): 1000(L)* 5(B)* 10(H)
(THERE ARE POSITIVE AND NEGATIVE POLES)
CCT: 3K / 4K | WARRANTY: 3 YEARS
MRP: ₹ XXXX /-

*FIXTURE BY DEFAULT IS TRIAC DIMMABLE

TRACK LIGHTS

78



NEW

ML-B-5W (5W) | DC 24V
TRACK LIGHT

LED: CREE | CRI > 90 | BEAM ANGLE: 24°
BODY SIZE (MM): 35(L)* 58(B)
BODY COLOUR: BLACK | BODY: DIE-CASTING
ALUMINUM | CCT: 3K / 4K | WARRANTY: 3 YEARS
MRP: ₹ XXXX /-



79



NEW

ML-B-9W (9W) | DC 24V
TRACK LIGHT

LED: CREE | CRI > 90 | BEAM ANGLE: 24°
BODY SIZE (MM): 45(L)* 58(B)
BODY COLOUR: BLACK | BODY: DIE-CASTING
ALUMINUM | CCT: 3K / 4K | WARRANTY: 3 YEARS
MRP: ₹ XXXX /-



SURFACE SPOT

80



NEW

ML-C-5W (5W) | DC 24V
SURFACE SPOT LIGHT

LED: CREE | CRI > 90 | BEAM ANGLE: 24°
BODY SIZE (MM): 60(L)* 38(B)
BODY COLOUR: BLACK | BODY: DIE-CASTING
ALUMINUM | CCT: 3K / 4K | WARRANTY: 3 YEARS
MRP: ₹ XXXX /-



SURFACE DOWNLIGHT

81



NEW

ML-D-12W (12W) | DC 24V

SURFACE DOWNLIGHT

LED: CREE | CRI > 90 | BEAM ANGLE: 100°
BODY SIZE (MM): 113(L)* 34(B)
BODY COLOUR: BLACK | BODY: DIE-CASTING
ALUMINUM | CCT: 3K / 4K | WARRANTY: 3 YEARS
MRP: ₹ XXXX /-

*FIXTURE BY DEFAULT IS TRIAC DIMMABLE

LINEAR DIFFUSED

82



NEW

ML-E-8W (8W) | DC 24V

LINEAR DIFFUSED LIGHT

LED: CREE | CRI > 90 | BEAM ANGLE: 100°
BODY SIZE (MM): 300(L)*10(B) | CLIP SIZE: 346
BODY COLOUR: BLACK | BODY: DIE-CASTING
ALUMINUM | CCT: 3K / 4K | WARRANTY: 3 YEARS
MRP: ₹ XXXX /-

*FIXTURE BY DEFAULT IS TRIAC DIMMABLE

83



NEW

ML-E-16W (16W) | DC 24V

LINEAR DIFFUSED LIGHT

LED: CREE | CRI > 90 | BEAM ANGLE: 100°
BODY SIZE (MM): 600(L)*10(B) | CLIP SIZE: 646
BODY COLOUR: BLACK | BODY: DIE-CASTING
ALUMINUM | CCT: 3K / 4K | WARRANTY: 3 YEARS
MRP: ₹ XXXX /-

*FIXTURE BY DEFAULT IS TRIAC DIMMABLE

LINEAR FIXED SPOTS

84



NEW



ML-F-6W (6W) | DC 24V

LINEAR FIXED SPOT LIGHT

LED: CREE | CRI > 90 | BEAM ANGLE: 30°
BODY SIZE (MM): 100(L)*10(B) | CLIP SIZE: 146
BODY COLOUR: BLACK | BODY: DIE-CASTING
ALUMINUM | CCT: 3K / 4K | WARRANTY: 3 YEARS
MRP: ₹ XXXX /-

*FIXTURE BY DEFAULT IS TRIAC DIMMABLE

85



NEW



ML-F-10W (10W) | DC 24V

LINEAR FIXED SPOT LIGHT

LED: CREE | CRI > 90 | BEAM ANGLE: 30°
BODY SIZE (MM): 196(L)*10(B) | CLIP SIZE: 242
BODY COLOUR: BLACK | BODY: DIE-CASTING
ALUMINUM | CCT: 3K / 4K | WARRANTY: 3 YEARS
MRP: ₹ XXXX /-

*FIXTURE BY DEFAULT IS TRIAC DIMMABLE

86



NEW



ML-F-15W (15W) | DC 24V

LINEAR FIXED SPOT LIGHT

LED: CREE | CRI > 90 | BEAM ANGLE: 30°
BODY SIZE (MM): 292(L)*10(B) | CLIP SIZE: 337
BODY COLOUR: BLACK | BODY: DIE-CASTING
ALUMINUM | CCT: 3K / 4K | WARRANTY: 3 YEARS
MRP: ₹ XXXX /-

*FIXTURE BY DEFAULT IS TRIAC DIMMABLE

LINEAR TILTABLE SPOTS

87



NEW



ML-G-6W (6W) | DC 24V

LINEAR TILTABLE SPOT LIGHT

LED: CREE | CRI > 90 | BEAM ANGLE: 30°
BODY SIZE (MM): 118(L)* 15(B)* 85(H)
BODY COLOUR: BLACK | BODY: DIE-CASTING
ALUMINUM | CCT: 3K / 4K | WARRANTY: 3 YEARS
MRP: ₹ XXXX /-

*FIXTURE BY DEFAULT IS TRIAC DIMMABLE

88



NEW



ML-G-12W (12W) | DC 24V

LINEAR TILTABLE SPOT LIGHT

LED: CREE | CRI > 90 | BEAM ANGLE: 30°
BODY SIZE (MM): 231(L)* 15(B)* 85(H)
BODY COLOUR: BLACK | BODY: DIE-CASTING
ALUMINUM | CCT: 3K / 4K | WARRANTY: 3 YEARS
MRP: ₹ XXXX /-

*FIXTURE BY DEFAULT IS TRIAC DIMMABLE

IN-TRACK DRIVER

89



NEW

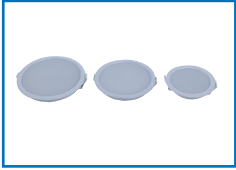
ML-PS-100W-IB (100W)

24V IN-TRACK DRIVER

220 - 240V | WARRANTY: 3 YEARS
BODY SIZE (MM): 412(L)* 17(B)* 29.8(H)
MRP: ₹ XXXX /-

LED DOWNLIGHTS

90

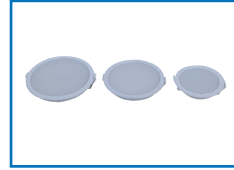


LPDLO01 (9W) | PRIME

PC DOWNLIGHT

LED: EPISTAR | CRI > 80 | BEAM ANGLE: 120°
CUTOUT (MM): 100 Ø | SIZE (MM): 110 Ø* 30(H)
BODY COLOUR: WHITE | BODY: PC
CCT: 3K/4K/6K | WARRANTY: 2 YEARS
MRP: ₹ XXXX /-

91



LPDLO01 (15W) | PRIME

PC DOWNLIGHT

LED: EPISTAR | CRI > 80 | BEAM ANGLE: 120°
CUTOUT (MM): 125 Ø | SIZE (MM): 135 Ø* 30(H)
BODY COLOUR: WHITE | BODY: PC
CCT: 3K/4K/6K | WARRANTY: 2 YEARS
MRP: ₹ XXXX /-

92



LPDLO01 (22W) | PRIME

PC DOWNLIGHT

LED: EPISTAR | CRI > 80 | BEAM ANGLE: 120°
CUTOUT (MM): 150 Ø | SIZE (MM): 160 Ø* 30(H)
BODY COLOUR: WHITE | BODY: PC
CCT: 3K/4K/6K | WARRANTY: 2 YEARS
MRP: ₹ XXXX /-

93



LPDLO02 (12W) | NEO

DEEP DOWNLIGHT

LED: BRIDGELUX | CRI > 80 | BEAM ANGLE: 110°
CUTOUT (MM): 110 Ø | SIZE (MM): 120 Ø* 50(H)
BODY COLOUR: WHITE/BLACK | BODY: ALUMINIUM
DRIVER: LUMEN PLUS / PHILIPS / FULHAM / BAG
CCT: 3K/4K/6K | WARRANTY: 2/3 YEARS
DIMMING: TRIAC / ANALOG / DALI
MRP: ₹ XXXX /-



94



LPDLO02 (18W) | NEO

DEEP DOWNLIGHT

LED: BRIDGELUX | CRI > 80 | BEAM ANGLE: 110°
CUTOUT (MM): 137 Ø | SIZE (MM): 150 Ø* 50(H)
BODY COLOUR: WHITE/BLACK | BODY: ALUMINIUM
DRIVER: LUMEN PLUS / PHILIPS / FULHAM / BAG
CCT: 3K/4K/6K | WARRANTY: 2/3 YEARS
DIMMING: TRIAC / ANALOG / DALI
MRP: ₹ XXXX /-



95



LPDLO02 (24W) | NEO

DEEP DOWNLIGHT

LED: BRIDGELUX | CRI > 80 | BEAM ANGLE: 110°
CUTOUT (MM): 160 Ø | SIZE (MM): 170 Ø* 50(H)
BODY COLOUR: WHITE/BLACK | BODY: ALUMINIUM
DRIVER: LUMEN PLUS / PHILIPS / FULHAM / BAG
CCT: 3K/4K/6K | WARRANTY: 2/3 YEARS
DIMMING: TRIAC / ANALOG / DALI
MRP: ₹ XXXX /-



96



LPDLO03 (7W) | CLEO

LOW DEEP DOWNLIGHT

LED: BRIDGELUX | CRI > 80 | BEAM ANGLE: 110°
CUTOUT (MM): 70 Ø | SIZE (MM): 84 Ø* 33(H)
BODY COLOUR: WHITE/BLACK | BODY: ALUMINIUM
DRIVER: LUMEN PLUS / PHILIPS / FULHAM / BAG
CCT: 3K/4K/6K | WARRANTY: 2/3 YEARS
MRP: ₹ XXXX /-



97



LPDLO03 (12W) | CLEO

LOW DEEP DOWNLIGHT

LED: BRIDGELUX | CRI > 80 | BEAM ANGLE: 110°
CUTOUT (MM): 95 Ø | SIZE (MM): 109 Ø* 33(H)
BODY COLOUR: WHITE/BLACK | BODY: ALUMINIUM
DRIVER: LUMEN PLUS / PHILIPS / FULHAM / BAG
CCT: 3K/4K/6K | WARRANTY: 2/3 YEARS
MRP: ₹ XXXX /-



98



LPDLO03 (18W) | CLEO

LOW DEEP DOWNLIGHT

LED: BRIDGELUX | CRI > 80 | BEAM ANGLE: 110°
CUTOUT (MM): 140 Ø | SIZE (MM): 143 Ø* 33(H)
BODY COLOUR: WHITE/BLACK | BODY: ALUMINIUM
DRIVER: LUMEN PLUS / PHILIPS / FULHAM / BAG
CCT: 3K/4K/6K | WARRANTY: 2/3 YEARS
MRP: ₹ XXXX /-



LED DOWNLIGHTS

99



LPDL004 (12W) | LEXUS REFLECTOR DOWNLIGHT

LED: EPISTAR | CRI > 80 | BEAM ANGLE: 120°
CUTOUT (MM): 90 Ø | SIZE (MM): 100 Ø* 50(H)
BODY COLOUR: WHITE | REF. COLOUR: TITANIUM
CCT: 3K/4K/6K | WARRANTY: 2 YEARS
DRIVER: LUMEN PLUS / PHILIPS / FULHAM / BAG
MRP: ₹ XXXX /-

100



LPDL004 (18W) | LEXUS REFLECTOR DOWNLIGHT

LED: EPISTAR | CRI > 80 | BEAM ANGLE: 120°
CUTOUT (MM): 120 Ø | SIZE (MM): 130 Ø* 50(H)
BODY COLOUR: WHITE | REF. COLOUR: TITANIUM
CCT: 3K/4K/6K | WARRANTY: 2 YEARS
DRIVER: LUMEN PLUS / PHILIPS / FULHAM / BAG
MRP: ₹ XXXX /-

101



LPDL004 (24W) | LEXUS REFLECTOR DOWNLIGHT

LED: EPISTAR | CRI > 80 | BEAM ANGLE: 120°
CUTOUT (MM): 140 Ø | SIZE (MM): 150 Ø* 50(H)
BODY COLOUR: WHITE | REF. COLOUR: TITANIUM
CCT: 3K/4K/6K | WARRANTY: 2 YEARS
DRIVER: LUMEN PLUS / PHILIPS / FULHAM / BAG
MRP: ₹ XXXX /-

102



LPDL005 (7W) | BRIO DOWNLIGHT

LED: OSRAM | CRI > 80 | BEAM ANGLE: 120°
CUTOUT (MM): 75 Ø | SIZE (MM): 85 Ø* 45(H)
BODY COLOUR: TITANIUM | BODY: ALUMINIUM
CCT: 3K/4K/6K | WARRANTY: 2 YEARS
DRIVER: LUMEN PLUS / PHILIPS / FULHAM / BAG
MRP: ₹ XXXX /-

103



LPDL005 (12W) | BRIO DOWNLIGHT

LED: OSRAM | CRI > 80 | BEAM ANGLE: 120°
CUTOUT (MM): 95 Ø | SIZE (MM): 105 Ø* 48(H)
BODY COLOUR: TITANIUM | BODY: ALUMINIUM
CCT: 3K/4K/6K | WARRANTY: 2 YEARS
DRIVER: LUMEN PLUS / PHILIPS / FULHAM / BAG
MRP: ₹ XXXX /-

104

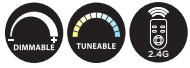


LPDL005 (18W) | BRIO DOWNLIGHT

LED: OSRAM | CRI > 80 | BEAM ANGLE: 120°
CUTOUT (MM): 115 Ø | SIZE (MM): 125 Ø* 56(H)
BODY COLOUR: TITANIUM | BODY: ALUMINIUM
CCT: 3K/4K/6K | WARRANTY: 2 YEARS
DRIVER: LUMEN PLUS / PHILIPS / FULHAM / BAG
MRP: ₹ XXXX /-

LED COB LIGHTS

105



**LPSL003 (7W) | PEAK
COB SPOTLIGHT | 120 L/W**

LED: BRIDGELUX / TYF BRIDGELUX | CRI > 80 |
BEAM ANGLE: 36° | CCT: 3K/4K/6K
CUTOUT (MM): 60 Ø | SIZE (MM): 68 Ø* 62(H)
BODY COLOUR: WHITE / BLACK | BODY: ALUMINIUM
WARRANTY: 2/3 YEARS
DIMMING: TRIAC / ANALOG / DALI
DRIVER: LUMEN PLUS / PHILIPS / FULHAM / BAG
MRP: ₹ XXXX /-

106



**LPSL003 (9W/12W) | PEAK
COB SPOTLIGHT | 120 L/W**

LED: BRIDGELUX / TYF BRIDGELUX | CRI > 80 |
BEAM ANGLE: 36° | CCT: 3K/4K/6K
CUTOUT (MM): 75 Ø | SIZE (MM): 85 Ø* 75(H)
BODY COLOUR: WHITE / BLACK | BODY: ALUMINIUM
WARRANTY: 2/3 YEARS
DIMMING: TRIAC / ANALOG / DALI
DRIVER: LUMEN PLUS / PHILIPS / FULHAM / BAG
MRP: ₹ XXXX /-

107



**LPSL003 (15W/18W) | PEAK
COB SPOTLIGHT | 120 L/W**

LED: BRIDGELUX / TYF BRIDGELUX | CRI > 80 |
BEAM ANGLE: 36° | CCT: 3K/4K/6K
CUTOUT (MM): 83 Ø | SIZE (MM): 95 Ø* 100(H)
BODY COLOUR: WHITE / BLACK | BODY: ALUMINIUM
WARRANTY: 2/3 YEARS
DIMMING: TRIAC / ANALOG / DALI
DRIVER: LUMEN PLUS / PHILIPS / FULHAM / BAG
MRP: ₹ XXXX /-

108



**LPSL003 (24W) | PEAK
COB SPOTLIGHT | 120 L/W**

LED: BRIDGELUX / TYF BRIDGELUX | CRI > 80 |
BEAM ANGLE: 36° | CCT: 3K/4K/6K
CUTOUT (MM): XXXX Ø | SIZE (MM): XX Ø* XX(H)
BODY COLOUR: WHITE / BLACK | BODY: ALUMINIUM
WARRANTY: 2/3 YEARS
DIMMING: TRIAC / ANALOG / DALI
DRIVER: LUMEN PLUS / PHILIPS / FULHAM / BAG
MRP: ₹ XXXX /-

109



**LPSL003 (30W) | PEAK
COB SPOTLIGHT | 120 L/W**

LED: BRIDGELUX / TYF BRIDGELUX | CRI > 80 |
BEAM ANGLE: 36° | CCT: 3K/4K/6K
CUTOUT (MM): XXXX Ø | SIZE (MM): XX Ø* XX(H)
BODY COLOUR: WHITE / BLACK | BODY: ALUMINIUM
WARRANTY: 2/3 YEARS
DIMMING: TRIAC / ANALOG / DALI
DRIVER: LUMEN PLUS / PHILIPS / FULHAM / BAG
MRP: ₹ XXXX /-

110



**LPSL005 (7W) | SHINE
COB SPOTLIGHT | 120 L/W**

LED: TYF BRIDGELUX | CRI > 80 BEAM ANGLE: 36°
CCT: 3K/4K/6K | CUTOUT (MM): 65 Ø
SIZE (MM): 70 Ø* 50(H) | BODY: ALUMINIUM
BODY COLOUR: WHITE / BLACK
REFLECTOR: COPPER / TITANIUM / MATT WHITE
WARRANTY: 2 YEARS | DRIVER: LUMEN PLUS
MRP: ₹ XXXX /-

111



**LPSL005 (12W) | SHINE
COB SPOTLIGHT | 120 L/W**

LED: TYF BRIDGELUX | CRI > 80 BEAM ANGLE: 36°
CCT: 3K/4K/6K | CUTOUT (MM): 80 Ø
SIZE (MM): 85 Ø* 60(H) | BODY: ALUMINIUM
BODY COLOUR: WHITE / BLACK
REFLECTOR: COPPER / TITANIUM / MATT WHITE
WARRANTY: 2 YEARS | DRIVER: LUMEN PLUS
MRP: ₹ XXXX /-

112



**LPSL005 (18W) | SHINE
COB SPOTLIGHT | 120 L/W**

LED: TYF BRIDGELUX | CRI > 80 BEAM ANGLE: 36°
CCT: 3K/4K/6K | CUTOUT (MM): 90 Ø
SIZE (MM): 95 Ø* 75(H) | BODY: ALUMINIUM
BODY COLOUR: WHITE / BLACK
REFLECTOR: COPPER / TITANIUM / MATT WHITE
WARRANTY: 2 YEARS | DRIVER: LUMEN PLUS
MRP: ₹ XXXX /-

113



**LPSL007 (7W) | HARMONY
COB SPOTLIGHT | 120 L/W**

LED: BRIDGELUX / TYF BRIDGELUX | CRI > 80 |
BEAM ANGLE: 36° | CCT: 3K/4K/6K
CUTOUT (MM): 65 Ø | SIZE (MM): 75 Ø* 60(H)
BODY COLOUR: WHITE / BLACK | BODY: ALUMINIUM
REF: ROSEGOLD/TITANIUM | WARRANTY: 2/3 YEARS
DIMMING: TRIAC / ANALOG / DALI
DRIVER: LUMEN PLUS / PHILIPS / FULHAM / BAG
MRP: ₹ XXXX /-

114



**LPSL007 (9W/12W) | HARMONY
COB SPOTLIGHT | 120 L/W**

LED: BRIDGELUX / TYF BRIDGELUX | CRI > 80 |
BEAM ANGLE: 36° | CCT: 3K/4K/6K
CUTOUT (MM): 75 Ø | SIZE (MM): 85 Ø* 80(H)
BODY COLOUR: WHITE / BLACK | BODY: ALUMINIUM
REF: ROSEGOLD/TITANIUM | WARRANTY: 2/3 YEARS
DIMMING: TRIAC / ANALOG / DALI
DRIVER: LUMEN PLUS / PHILIPS / FULHAM / BAG
MRP: ₹ XXXX /-

115



**LPSL007 (15W/18W) | HARMONY
COB SPOTLIGHT | 120 L/W**

LED: BRIDGELUX / TYF BRIDGELUX | CRI > 80 |
BEAM ANGLE: 36° | CCT: 3K/4K/6K
CUTOUT (MM): 85 Ø | SIZE (MM): 95 Ø* 100(H)
BODY COLOUR: WHITE / BLACK | BODY: ALUMINIUM
REF: ROSEGOLD/TITANIUM | WARRANTY: 2/3 YEARS
DIMMING: TRIAC / ANALOG / DALI
DRIVER: LUMEN PLUS / PHILIPS / FULHAM / BAG
MRP: ₹ XXXX /-

116



**LPSL009 (7W/9W) | JAZZ
COB SPOTLIGHT | 120 L/W**

LED: BRIDGELUX | CRI > 80 | CCT: 3K/4K/6K
BEAM ANGLE: 24°/36°/55°
CUTOUT (MM): 55 Ø | SIZE (MM): 62 Ø* 59(H)
BODY COLOUR: WHITE / BLACK | BODY: ALUMINIUM
REF: ROSEGOLD / TITANIUM / MATT WHITE / MATT
BALCK / MATT SILVER / CHROME
WARRANTY: 3 YEARS
DIMMING: TRIAC / ANALOG / DALI
DRIVER: LUMEN PLUS / PHILIPS / FULHAM / BAG
MRP: ₹ XXXX /-

117



**LPSL009 (12W) | JAZZ
COB SPOTLIGHT | 120 L/W**

LED: BRIDGELUX | CRI > 80 | CCT: 3K/4K/6K
BEAM ANGLE: 24°/36°/55°
CUTOUT (MM): 75 Ø | SIZE (MM): 85 Ø* 54(H)
BODY COLOUR: WHITE / BLACK | BODY: ALUMINIUM
REF: ROSEGOLD / TITANIUM / MATT WHITE / MATT
BALCK / MATT SILVER / CHROME
WARRANTY: 3 YEARS
DIMMING: TRIAC / ANALOG / DALI
DRIVER: LUMEN PLUS / PHILIPS / FULHAM / BAG
MRP: ₹ XXXX /-

118



**LPSL009 (15W/18W) | JAZZ
COB SPOTLIGHT | 120 L/W**

LED: BRIDGELUX | CRI > 80 | CCT: 3K/4K/6K
BEAM ANGLE: 24°/36°/55°
CUTOUT (MM): 95 Ø | SIZE (MM): 105 Ø* 72(H)
BODY COLOUR: WHITE / BLACK | BODY: ALUMINIUM
REF: ROSEGOLD / TITANIUM / MATT WHITE / MATT
BALCK / MATT SILVER / CHROME
WARRANTY: 3 YEARS
DIMMING: TRIAC / ANALOG / DALI
DRIVER: LUMEN PLUS / PHILIPS / FULHAM / BAG
MRP: ₹ XXXX /-

119



**LPSL009 (24W) | JAZZ
COB SPOTLIGHT | 120 L/W**

LED: BRIDGELUX | CRI > 80 | CCT: 3K/4K/6K
BEAM ANGLE: 24°/36°/55°
CUTOUT (MM): 115 Ø | SIZE (MM): 130 Ø* 73(H)
BODY COLOUR: WHITE / BLACK | BODY: ALUMINIUM
REF: ROSEGOLD / TITANIUM / MATT WHITE / MATT
BALCK / MATT SILVER / CHROME
WARRANTY: 3 YEARS
DIMMING: TRIAC / ANALOG / DALI
DRIVER: LUMEN PLUS / PHILIPS / FULHAM / BAG
MRP: ₹ XXXX /-

120



**LPSL010 (7W) | DROPSPOT
PULLOUT SPOTLIGHT | 120 L/W**

LED: BRIDGELUX | CRI > 80 | CCT: 3K/4K/6K
BEAM ANGLE: 24°
CUTOUT (MM): 50 Ø | SIZE (MM): 60 Ø* 93(H)
BODY COLOUR: WHITE / BLACK | BODY: ALUMINIUM
WARRANTY: 3 YEARS
DIMMING: TRIAC / ANALOG / DALI
DRIVER: PHILIPS / FULHAM / BAG
MRP: ₹ XXXX /-

121



**LPSL010 (12W) | DROPSPOT
PULLOUT SPOTLIGHT | 120 L/W**

LED: BRIDGELUX | CRI > 80 | CCT: 3K/4K/6K
BEAM ANGLE: 24°
CUTOUT (MM): 75 Ø | SIZE (MM): 85 Ø* 105(H)
BODY COLOUR: WHITE / BLACK | BODY: ALUMINIUM
WARRANTY: 3 YEARS
DIMMING: TRIAC / ANALOG / DALI
DRIVER: PHILIPS / FULHAM / BAG
MRP: ₹ XXXX /-

122



**LPSL010 (7W X 2) | DUAL DROPSPOT
PULLOUT SPOTLIGHT | 120 L/W**

LED: BRIDGELUX | CRI > 80 | CCT: 3K/4K/6K
BEAM ANGLE: 24° | CUTOUT (MM): AS PER OUTLINE
SIZE (MM): 140 Ø* 80* 105(H)
BODY COLOUR: WHITE / BLACK | BODY: ALUMINIUM
WARRANTY: 3 YEARS
DIMMING: TRIAC / ANALOG / DALI
DRIVER: PHILIPS / FULHAM / BAG
MRP: ₹ XXXX /-

123



**LPSLO10 (12W X 2) | DUAL DROPSPOT
PULLOUT SPOTLIGHT | 120 L/W**

LED: BRIDGELUX | CRI > 80 | CCT: 3K/4K/6K
BEAM ANGLE: 24° | CUTOUT (MM): AS PER OUTLINE
SIZE (MM): 194 Ø* 105* 116(H)
BODY COLOUR: WHITE / BLACK | BODY: ALUMINIUM
WARRANTY: 3 YEARS
DIMMING: TRIAC / ANALOG / DALI
DRIVER: PHILIPS / FULHAM / BAG
MRP: ₹ XXXX /-

124



**LPSLO15 (7W) | GALAXY
COB SPOTLIGHT | 120 L/W**

LED: BRIDGELUX | CRI > 80 | CCT: 3K/4K/6K
BEAM ANGLE: 24°
CUTOUT (MM): 55 Ø | SIZE (MM): 62 Ø* 82(H)
BODY COLOUR: WHITE / TITANIUM
BODY: ALUMINIUM | WARRANTY: 3 YEARS
DIMMING: TRIAC / ANALOG / DALI
DRIVER: PHILIPS / FULHAM / BAG
MRP: ₹ XXXX /-

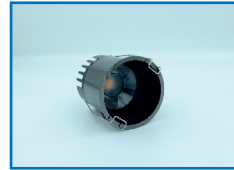
125



**LPSLO15 (9W/12W) | GALAXY
COB SPOTLIGHT | 120 L/W**

LED: BRIDGELUX | CRI > 80 | CCT: 3K/4K/6K
BEAM ANGLE: 36°
CUTOUT (MM): 65 Ø | SIZE (MM): 72 Ø* 82(H)
BODY COLOUR: WHITE / TITANIUM
BODY: ALUMINIUM | WARRANTY: 3 YEARS
DIMMING: TRIAC / ANALOG / DALI
DRIVER: PHILIPS / FULHAM / BAG
MRP: ₹ XXXX /-

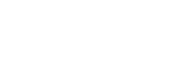
126



**LPSLO15 (15W/18W) | GALAXY
COB SPOTLIGHT | 120 L/W**

LED: BRIDGELUX | CRI > 80 | CCT: 3K/4K/6K
BEAM ANGLE: 36°
CUTOUT (MM): 75 Ø | SIZE (MM): 82 Ø* 82(H)
BODY COLOUR: WHITE / TITANIUM
BODY: ALUMINIUM | WARRANTY: 3 YEARS
DIMMING: TRIAC / ANALOG / DALI
DRIVER: PHILIPS / FULHAM / BAG
MRP: ₹ XXXX /-

127



**LPSLO16 (7W) | SIGMA
COB SPOTLIGHT | 120 L/W**

LED: BRIDGELUX | CRI > 80 | CCT: 3K/4K/6K
BEAM ANGLE: 36°
CUTOUT (MM): 58 Ø | SIZE (MM): 65 Ø* 65(H)
BODY COLOUR: ROSEGOLD / TITANIUM
BODY: ALUMINIUM | WARRANTY: 2 YEARS
DRIVER: LUMEN PLUS
MRP: ₹ XXXX /-

128



**LPSLO16 (12W) | SIGMA
COB SPOTLIGHT | 120 L/W**

LED: BRIDGELUX | CRI > 80 | CCT: 3K/4K/6K
BEAM ANGLE: 36°
CUTOUT (MM): 75 Ø | SIZE (MM): 85 Ø* 80(H)
BODY COLOUR: ROSEGOLD / TITANIUM
BODY: ALUMINIUM | WARRANTY: 2 YEARS
DRIVER: LUMEN PLUS
MRP: ₹ XXXX /-

129



**LPSLO17 (7W) | ANDREA
COB SPOTLIGHT | 120 L/W**

LED: BRIDGELUX | CRI > 80 | CCT: 3K/4K/6K
BEAM ANGLE: 24° | BODY COLOUR: WHITE
CUTOUT (MM): 55 Ø | SIZE (MM): 58 Ø* 95(H)
BODY: ALUMINIUM | WARRANTY: 3 YEARS
DIMMING: TRIAC / ANALOG / DALI
DRIVER: PHILIPS / FULHAM / BAG
MRP: ₹ XXXX /-

130



**LPSLO17 (9W/12W) | ANDREA
COB SPOTLIGHT | 120 L/W**

LED: BRIDGELUX | CRI > 80 | CCT: 3K/4K/6K
BEAM ANGLE: 24° | BODY COLOUR: WHITE
CUTOUT (MM): 70 Ø | SIZE (MM): 75 Ø* 100(H)
BODY: ALUMINIUM | WARRANTY: 3 YEARS
DIMMING: TRIAC / ANALOG / DALI
DRIVER: PHILIPS / FULHAM / BAG
MRP: ₹ XXXX /-

131



**LPSLO17 (15W/18W) | ANDREA
COB SPOTLIGHT | 120 L/W**

LED: BRIDGELUX | CRI > 80 | CCT: 3K/4K/6K
BEAM ANGLE: 24° | BODY COLOUR: WHITE
CUTOUT (MM): 80 Ø | SIZE (MM): 90 Ø* 125(H)
BODY: ALUMINIUM | WARRANTY: 3 YEARS
DIMMING: TRIAC / ANALOG / DALI
DRIVER: PHILIPS / FULHAM / BAG
MRP: ₹ XXXX /-

132



NEW

**LPSLO20 (7W) | APPLE
COB SPOTLIGHT | 120 L/W**

LED: BRIDGELUX | CRI > 80 | CCT: 3K/4K/6K
BEAM ANGLE: 24° | CUTOUT (MM): 55 Ø
SIZE (MM): 65 Ø* 45(H)
BODY COLOUR: TITANIUM | BODY: ALUMINIUM
WARRANTY: 2 YEARS
DRIVER: LUMEN PLUS
MRP: ₹ XXXX /-

133



NEW

**LPSLO20 (12W) | APPLE
COB SPOTLIGHT | 120 L/W**

LED: BRIDGELUX | CRI > 80 | CCT: 3K/4K/6K
BEAM ANGLE: 24° | CUTOUT (MM): 65 Ø
SIZE (MM): 75 Ø* 55(H)
BODY COLOUR: TITANIUM | BODY: ALUMINIUM
WARRANTY: 2 YEARS
DRIVER: LUMEN PLUS
MRP: ₹ XXXX /-

134



NEW

**LPSLO20 (18W) | APPLE
COB SPOTLIGHT | 120 L/W**

LED: BRIDGELUX | CRI > 80 | CCT: 3K/4K/6K
BEAM ANGLE: 24° | CUTOUT (MM): 85 Ø
SIZE (MM): 90 Ø* 90(H)
BODY COLOUR: TITANIUM | BODY: ALUMINIUM
WARRANTY: 2 YEARS
DRIVER: LUMEN PLUS
MRP: ₹ XXXX /-

135



NEW



**LPSLO21 (7W) | FLORA
COB SPOTLIGHT | 120 L/W**

LED: BRIDGELUX | CRI > 80 | CCT: 3K/4K/6K
BEAM ANGLE: 36°
CUTOUT (MM): 65 Ø | SIZE (MM): 70 Ø* 60(H)
BODY COLOUR: WHITE / TITANIUM
BODY: ALUMINIUM | WARRANTY: 3 YEARS
DIMMING: TRIAC / ANALOG / DALI
DRIVER: PHILIPS / FULHAM / BAG
MRP: ₹ XXXX /-

136



NEW



**LPSLO21 (12W) | FLORA
COB SPOTLIGHT | 120 L/W**

LED: BRIDGELUX | CRI > 80 | CCT: 3K/4K/6K
BEAM ANGLE: 36°
CUTOUT (MM): 75 Ø | SIZE (MM): 83 Ø* 75(H)
BODY COLOUR: WHITE / TITANIUM
BODY: ALUMINIUM | WARRANTY: 3 YEARS
DIMMING: TRIAC / ANALOG / DALI
DRIVER: PHILIPS / FULHAM / BAG
MRP: ₹ XXXX /-

137



NEW



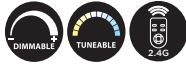
**LPSLO21 (18W) | FLORA
COB SPOTLIGHT | 120 L/W**

LED: BRIDGELUX | CRI > 80 | CCT: 3K/4K/6K
BEAM ANGLE: 36°
CUTOUT (MM): 85 Ø | SIZE (MM): 90 Ø* 85(H)
BODY COLOUR: WHITE / TITANIUM
BODY: ALUMINIUM | WARRANTY: 3 YEARS
DIMMING: TRIAC / ANALOG / DALI
DRIVER: PHILIPS / FULHAM / BAG
MRP: ₹ XXXX /-

138



NEW



**LPSLO22 (7W) | ATOM
COB SPOTLIGHT | 120 L/W**

LED: BRIDGELUX | CRI > 80 | CCT: 3K/4K/6K
BEAM ANGLE: 36°
CUTOUT (MM): 65 Ø | SIZE (MM): 68 Ø* 48(H)
BODY COLOUR: WHITE / BLACK
BODY: ALUMINIUM | WARRANTY: 3 YEARS
DIMMING: TRIAC / ANALOG / DALI
DRIVER: PHILIPS / FULHAM / BAG
MRP: ₹ XXXX /-

139



NEW



**LPSLO22 (12W) | ATOM
COB SPOTLIGHT | 120 L/W**

LED: BRIDGELUX | CRI > 80 | CCT: 3K/4K/6K
BEAM ANGLE: 36°
CUTOUT (MM): 75 Ø | SIZE (MM): 83 Ø* 55(H)
BODY COLOUR: WHITE / BLACK
BODY: ALUMINIUM | WARRANTY: 3 YEARS
DIMMING: TRIAC / ANALOG / DALI
DRIVER: PHILIPS / FULHAM / BAG
MRP: ₹ XXXX /-

140



NEW



**LPSLO22 (18W) | ATOM
COB SPOTLIGHT | 120 L/W**

LED: BRIDGELUX | CRI > 80 | CCT: 3K/4K/6K
BEAM ANGLE: 36°
CUTOUT (MM): 85 Ø | SIZE (MM): 90 Ø* 85(H)
BODY COLOUR: WHITE / BLACK
BODY: ALUMINIUM | WARRANTY: 3 YEARS
DIMMING: TRIAC / ANALOG / DALI
DRIVER: PHILIPS / FULHAM / BAG
MRP: ₹ XXXX /-

141



LPSLO23 (7W) | ALICE
COB SPOTLIGHT | 120 L/W
LED: BRIDGELUX | CRI > 80 | CCT: 3K/4K/6K
BEAM ANGLE: 24° | CUTOUT (MM): 34 Ø
SIZE (MM): 43 Ø* 86(H) | BODY: ALUMINIUM
BODY COLOUR: WHITE / TITANIUM
WARRANTY: 3 YEARS
DIMMING: TRIAC / ANALOG / DALI
DRIVER: PHILIPS / FULHAM / BAG
MRP: ₹ XXXX /-

142



LPSLO23 (9W/12W) | ALICE
COB SPOTLIGHT | 120 L/W
LED: BRIDGELUX | CRI > 80 | CCT: 3K/4K/6K
BEAM ANGLE: 24° | CUTOUT (MM): 54 Ø
SIZE (MM): 63 Ø* 98(H) | BODY: ALUMINIUM
BODY COLOUR: WHITE / TITANIUM
WARRANTY: 3 YEARS
DIMMING: TRIAC / ANALOG / DALI
DRIVER: PHILIPS / FULHAM / BAG
MRP: ₹ XXXX /-

143



LPSLO23 (15W/18W) | ALICE
COB SPOTLIGHT | 120 L/W
LED: BRIDGELUX | CRI > 80 | CCT: 3K/4K/6K
BEAM ANGLE: 24° | CUTOUT (MM): 72 Ø
SIZE (MM): 82 Ø* 109(H) | BODY: ALUMINIUM
BODY COLOUR: WHITE / TITANIUM
WARRANTY: 3 YEARS
DIMMING: TRIAC / ANALOG / DALI
DRIVER: PHILIPS / FULHAM / BAG
MRP: ₹ XXXX /-

144



LPSLO24 (12W) | GOLDY
COB SPOTLIGHT | 120 L/W
LED: BRIDGELUX | CRI > 80 | CCT: 3K/4K/6K
BEAM ANGLE: 36°
CUTOUT (MM): 65 Ø | SIZE (MM): 72 Ø* 61(H)
BODY COLOUR: WHITE / TITANIUM
BODY: ALUMINIUM | WARRANTY: 3 YEARS
DIMMING: TRIAC / ANALOG / DALI
DRIVER: PHILIPS / FULHAM / BAG
MRP: ₹ XXXX /-

145



LPSLO24 (18W) | GOLDY
COB SPOTLIGHT | 120 L/W
LED: BRIDGELUX | CRI > 80 | CCT: 3K/4K/6K
BEAM ANGLE: 36°
CUTOUT (MM): 73 Ø | SIZE (MM): 82 Ø* 63(H)
BODY COLOUR: WHITE / TITANIUM
BODY: ALUMINIUM | WARRANTY: 3 YEARS
DIMMING: TRIAC / ANALOG / DALI
DRIVER: PHILIPS / FULHAM / BAG
MRP: ₹ XXXX /-

146



LPSLO25 (7W) | VALE
COB SPOTLIGHT | 120 L/W
LED: BRIDGELUX | CRI > 80 | CCT: 3K/4K/6K
BEAM ANGLE: 36°
CUTOUT (MM): 54 Ø | SIZE (MM): 62 Ø* 78(H)
BODY COLOUR: WHITE / TITANIUM
BODY: ALUMINIUM | WARRANTY: 3 YEARS
DIMMING: TRIAC / ANALOG / DALI
DRIVER: PHILIPS / FULHAM / BAG
MRP: ₹ XXXX /-

147



LPSLO25 (9W/12W) | VALE
COB SPOTLIGHT | 120 L/W
LED: BRIDGELUX | CRI > 80 | CCT: 3K/4K/6K
BEAM ANGLE: 36°
CUTOUT (MM): 64 Ø | SIZE (MM): 72 Ø* 88(H)
BODY COLOUR: WHITE / BLACK
BODY: ALUMINIUM | WARRANTY: 3 YEARS
DIMMING: TRIAC / ANALOG / DALI
DRIVER: PHILIPS / FULHAM / BAG
MRP: ₹ XXXX /-

148



LPSLO25 (15W/18W) | VALE
COB SPOTLIGHT | 120 L/W
LED: BRIDGELUX | CRI > 80 | CCT: 3K/4K/6K
BEAM ANGLE: 36°
CUTOUT (MM): 74 Ø | SIZE (MM): 82 Ø* 88(H)
BODY COLOUR: WHITE / BLACK
BODY: ALUMINIUM | WARRANTY: 3 YEARS
DIMMING: TRIAC / ANALOG / DALI
DRIVER: PHILIPS / FULHAM / BAG
MRP: ₹ XXXX /-

149



LPSLO26 (7W) | WONDER
COB SPOTLIGHT | 120 L/W
LED: BRIDGELUX | CRI > 80 | CCT: 3K/4K/6K
BEAM ANGLE: 36°
CUTOUT (MM): 80 Ø | SIZE (MM): 85 Ø* XX(H)
BODY COLOUR: WHITE
BODY: ALUMINIUM | WARRANTY: 2/3 YEARS
DIMMING: TRIAC / ANALOG / DALI
DRIVER: LUMEN PLUS / PHILIPS / FULHAM / BAG
MRP: ₹ XXXX /-

150



LPSLO26 (12W) | WONDER
COB SPOTLIGHT | 120 L/W
LED: BRIDGELUX | CRI > 80 | CCT: 3K/4K/6K
BEAM ANGLE: 36°
CUTOUT (MM): 80 Ø | SIZE (MM): 85 Ø* XX(H)
BODY COLOUR: WHITE
BODY: ALUMINIUM | WARRANTY: 2/3 YEARS
DIMMING: TRIAC / ANALOG / DALI
DRIVER: LUMEN PLUS / PHILIPS / FULHAM / BAG
MRP: ₹ XXXX /-

151



**LPSLO26 (18W) | WONDER
COB SPOTLIGHT | 120 L/W**

LED: BRIDGELUX | CRI > 80 | CCT: 3K/4K/6K
BEAM ANGLE: 36°
CUTOUT (MM): 100 Ø | SIZE (MM): 108 Ø* XX(H)
BODY COLOUR: WHITE
BODY: ALUMINIUM | WARRANTY: 2/3 YEARS
DIMMING: TRIAC / ANALOG / DALI
DRIVER: LUMEN PLUS / PHILIPS / FULHAM / BAG
MRP: ₹ XXXX /-

152



**LPSLO26 (24W/30W) | WONDER
COB SPOTLIGHT | 120 L/W**

LED: BRIDGELUX | CRI > 80 | CCT: 3K/4K/6K
BEAM ANGLE: 36°
CUTOUT (MM): 120 Ø | SIZE (MM): 135 Ø* XX(H)
BODY COLOUR: WHITE
BODY: ALUMINIUM | WARRANTY: 2/3 YEARS
DIMMING: TRIAC / ANALOG / DALI
DRIVER: LUMEN PLUS / PHILIPS / FULHAM / BAG
MRP: ₹ XXXX /-

153



**LPSLO27 (6W) | MICRO
COB SPOTLIGHT | 120 L/W**

LED: BRIDGELUX | CRI > 80 | CCT: 3K/4K/6K
BEAM ANGLE: 36°
CUTOUT (MM): 55 Ø | SIZE (MM): 62 Ø* 25(H)
BODY COLOUR: WHITE / BLACK
BODY: ALUMINIUM | WARRANTY: 3 YEARS
DIMMING: TRIAC / ANALOG / DALI
DRIVER: PHILIPS / FULHAM / BAG
MRP: ₹ XXXX /-

154



**LPSLO27 (9W) | MICRO
COB SPOTLIGHT | 120 L/W**

LED: BRIDGELUX | CRI > 80 | CCT: 3K/4K/6K
BEAM ANGLE: 36°
CUTOUT (MM): 65 Ø | SIZE (MM): 72 Ø* 28(H)
BODY COLOUR: WHITE / BLACK
BODY: ALUMINIUM | WARRANTY: 3 YEARS
DIMMING: TRIAC / ANALOG / DALI
DRIVER: PHILIPS / FULHAM / BAG
MRP: ₹ XXXX /-

155



**LPSLO27 (12W) | MICRO
COB SPOTLIGHT | 120 L/W**

LED: BRIDGELUX | CRI > 80 | CCT: 3K/4K/6K
BEAM ANGLE: 36°
CUTOUT (MM): 75 Ø | SIZE (MM): 83 Ø* 31(H)
BODY COLOUR: WHITE / BLACK
BODY: ALUMINIUM | WARRANTY: 3 YEARS
DIMMING: TRIAC / ANALOG / DALI
DRIVER: PHILIPS / FULHAM / BAG
MRP: ₹ XXXX /-

156



**LPSLO27 (15W) | MICRO
COB SPOTLIGHT | 120 L/W**

LED: BRIDGELUX | CRI > 80 | CCT: 3K/4K/6K
BEAM ANGLE: 36°
CUTOUT (MM): 95 Ø | SIZE (MM): 105 Ø* 34.5(H)
BODY COLOUR: WHITE / BLACK
BODY: ALUMINIUM | WARRANTY: 3 YEARS
DIMMING: TRIAC / ANALOG / DALI
DRIVER: PHILIPS / FULHAM / BAG
MRP: ₹ XXXX /-

IP 65 COB SPOT LIGHTS

157



**LPSLO28 (12W) | AQUA
COB SPOTLIGHT | 120 L/W**

LED: BRIDGELUX | CRI > 80 | CCT: 3K/4K/6K
BEAM ANGLE: 36°
CUTOUT (MM): 75 Ø | SIZE (MM): 85 Ø* 70(H)
BODY COLOUR: WHITE / BLACK
REF. COLOUR: WHITE / BLACK / CHROME / TITANIUM
BODY: ALUMINIUM + PC | WARRANTY: 2 YEARS
DRIVER: PHILIPS / FULHAM / BAG
MRP: ₹ XXXX /-

158



**LPSLO28 (18W) | AQUA
COB SPOTLIGHT | 120 L/W**

LED: BRIDGELUX | CRI > 80 | CCT: 3K/4K/6K
BEAM ANGLE: 36°
CUTOUT (MM): 95 Ø | SIZE (MM): 110 Ø* 78(H)
BODY COLOUR: WHITE / BLACK
REF. COLOUR: WHITE / BLACK / CHROME / TITANIUM
BODY: ALUMINIUM + PC | WARRANTY: 2 YEARS
DRIVER: PHILIPS / FULHAM / BAG
MRP: ₹ XXXX /-

159

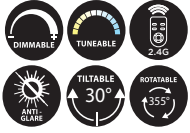


**LPSLO28 (30W) | AQUA
COB SPOTLIGHT | 120 L/W**

LED: BRIDGELUX | CRI > 80 | CCT: 3K/4K/6K
BEAM ANGLE: 36°
CUTOUT (MM): 125 Ø | SIZE (MM): 135 Ø* 91(H)
BODY COLOUR: WHITE / BLACK
REF. COLOUR: WHITE / BLACK / CHROME / TITANIUM
BODY: ALUMINIUM + PC | WARRANTY: 2 YEARS
DRIVER: PHILIPS / FULHAM / BAG
MRP: ₹ XXXX /-

FRONT REMOVABLE COB LIGHTS

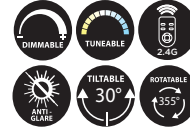
160



**LPSL008 (7W/9W) | SWORD FR
COB SPOTLIGHT | 120 L/W**

LED: BRIDGELUX | CRI > 80 | CCT: 3K/4K/6K
BEAM ANGLE: 15° / 24° / 36° / 55°
CUTOUT (MM): 55 Ø | SIZE (MM): 65 Ø* 75(H)
BODY COLOUR: WHITE / BLACK
REF. COLOUR: WHITE / BLACK / CHROME / TITANIUM
MATT SILVER / ROSE GOLD / GOLD
BODY: ALUMINIUM | WARRANTY: 2/3 YEARS
DIMMING: TRIAC / ANALOG / DALI
DRIVER: LUMEN PLUS / PHILIPS / FULHAM / BAG
MRP: ₹ XXXX /-

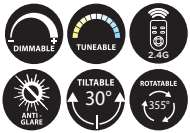
161



**LPSL008 (12W/15W) | SWORD FR
COB SPOTLIGHT | 120 L/W**

LED: BRIDGELUX | CRI > 80 | CCT: 3K/4K/6K
BEAM ANGLE: 15° / 24° / 36° / 55°
CUTOUT (MM): 75 Ø | SIZE (MM): 85 Ø* 96(H)
BODY COLOUR: WHITE / BLACK
REF. COLOUR: WHITE / BLACK / CHROME / TITANIUM
MATT SILVER / ROSE GOLD / GOLD
BODY: ALUMINIUM | WARRANTY: 2/3 YEARS
DIMMING: TRIAC / ANALOG / DALI
DRIVER: LUMEN PLUS / PHILIPS / FULHAM / BAG
MRP: ₹ XXXX /-

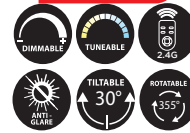
162



**LPSL008 (18W/24W) | SWORD FR
COB SPOTLIGHT | 120 L/W**

LED: BRIDGELUX | CRI > 80 | CCT: 3K/4K/6K
BEAM ANGLE: 15° / 24° / 36° / 55°
CUTOUT (MM): 95 Ø | SIZE (MM): 105 Ø* 110(H)
BODY COLOUR: WHITE / BLACK
REF. COLOUR: WHITE / BLACK / CHROME / TITANIUM
MATT SILVER / ROSE GOLD / GOLD
BODY: ALUMINIUM | WARRANTY: 2/3 YEARS
DIMMING: TRIAC / ANALOG / DALI
DRIVER: LUMEN PLUS / PHILIPS / FULHAM / BAG
MRP: ₹ XXXX /-

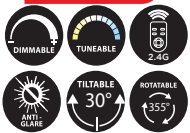
163



**LPSL008 (7W/9W) | SWORD TRL
COB SPOTLIGHT | 120 L/W**

LED: BRIDGELUX | CRI > 80 | CCT: 3K/4K/6K
BEAM ANGLE: 15° / 24° / 36° / 55°
CUTOUT (MM): 55 Ø | SIZE (MM): 88 Ø* 78(H)
BODY COLOUR: WHITE
REF. COLOUR: WHITE / BLACK / CHROME / TITANIUM
MATT SILVER / ROSE GOLD / GOLD
BODY: ALUMINIUM | WARRANTY: 2/3 YEARS
DIMMING: TRIAC / ANALOG / DALI
DRIVER: LUMEN PLUS / PHILIPS / FULHAM / BAG
MRP: ₹ XXXX /-

164



**LPSL008 (12W/15W) | SWORD TRL
COB SPOTLIGHT | 120 L/W**

LED: BRIDGELUX | CRI > 80 | CCT: 3K/4K/6K
BEAM ANGLE: 15° / 24° / 36° / 55°
CUTOUT (MM): 75 Ø | SIZE (MM): 108 Ø* 101(H)
BODY COLOUR: WHITE
REF. COLOUR: WHITE / BLACK / CHROME / TITANIUM
MATT SILVER / ROSE GOLD / GOLD
BODY: ALUMINIUM | WARRANTY: 2/3 YEARS
DIMMING: TRIAC / ANALOG / DALI
DRIVER: LUMEN PLUS / PHILIPS / FULHAM / BAG
MRP: ₹ XXXX /-

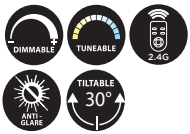
165



**LPSL008 (18W/24W) | SWORD TRL
COB SPOTLIGHT | 120 L/W**

LED: BRIDGELUX | CRI > 80 | CCT: 3K/4K/6K
BEAM ANGLE: 15° / 24° / 36° / 55°
CUTOUT (MM): 95 Ø | SIZE (MM): 128 Ø* 110(H)
BODY COLOUR: WHITE
REF. COLOUR: WHITE / BLACK / CHROME / TITANIUM
MATT SILVER / ROSE GOLD / GOLD
BODY: ALUMINIUM | WARRANTY: 2/3 YEARS
DIMMING: TRIAC / ANALOG / DALI
DRIVER: LUMEN PLUS / PHILIPS / FULHAM / BAG
MRP: ₹ XXXX /-

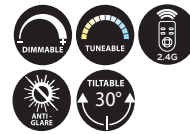
166



**LPSL008 (7W/9W X 2) | SWORD DUO
COB SPOTLIGHT | 120 L/W**

LED: BRIDGELUX | CRI > 80 | CCT: 3K/4K/6K
BEAM ANGLE: 15° / 24° / 36° / 55°
CUTOUT (MM): 105*55 | SIZE (MM): 115*65*85(H)
BODY COLOUR: WHITE / BLACK
REF. COLOUR: TITANIUM
BODY: ALUMINIUM | WARRANTY: 2/3 YEARS
DIMMING: TRIAC / ANALOG / DALI
DRIVER: LUMEN PLUS / PHILIPS / FULHAM / BAG
MRP: ₹ XXXX /-

167



**LPSL008 (12/15W X 2) | SWORD DUO
COB SPOTLIGHT | 120 L/W**

LED: BRIDGELUX | CRI > 80 | CCT: 3K/4K/6K
BEAM ANGLE: 15° / 24° / 36° / 55°
CUTOUT (MM): 145*75 | SIZE (MM): 155*85*96(H)
BODY COLOUR: WHITE / BLACK
REF. COLOUR: TITANIUM
BODY: ALUMINIUM | WARRANTY: 2/3 YEARS
DIMMING: TRIAC / ANALOG / DALI
DRIVER: LUMEN PLUS / PHILIPS / FULHAM / BAG
MRP: ₹ XXXX /-

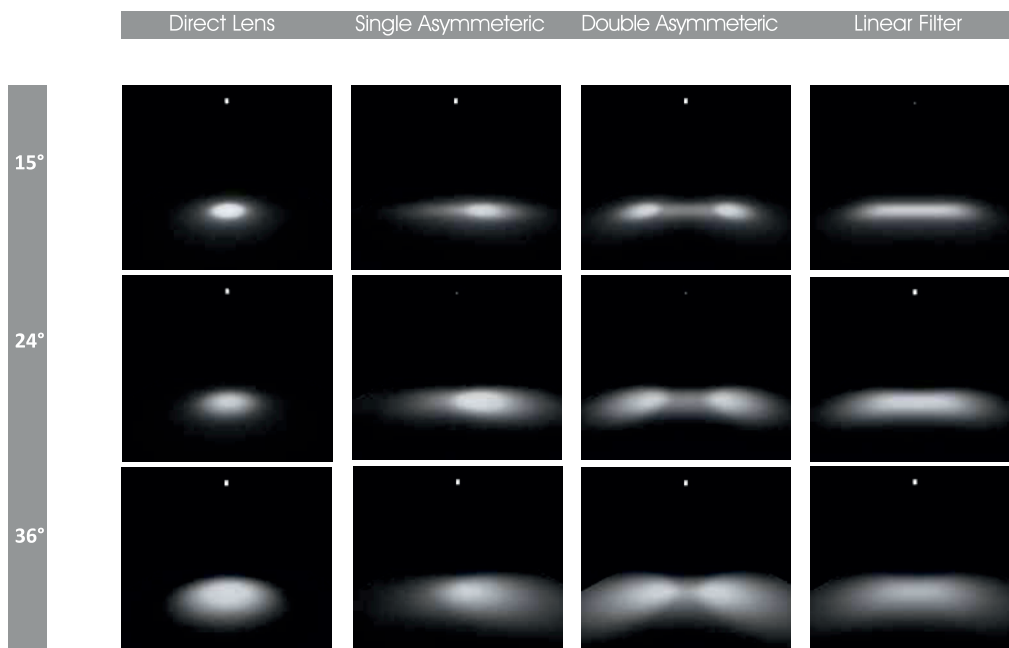
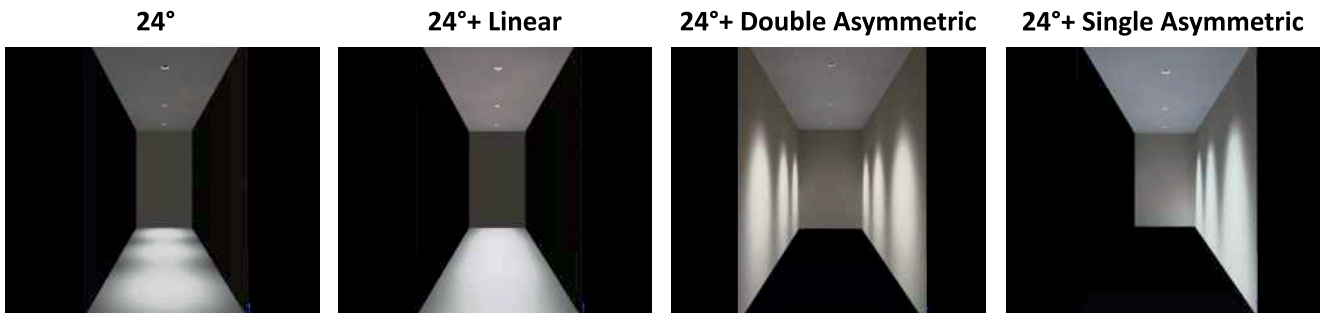
FILTERS

FILTER TYPE	WATTAGE
LINEAR	7W / 9W / 12W / 15W / 18W / 24W
SINGLE ASYMMETRIC	7W / 9W / 12W / 15W / 18W / 24W
DOUBLE ASYMMETRIC	7W / 9W / 12W / 15W / 18W / 24W
HONEYCOMB	7W / 9W / 12W / 15W / 18W / 24W

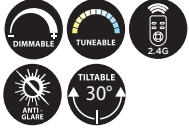
SWORD FILTER & LENS APPLICATIONS



Different Angle Different Filter Different Effect



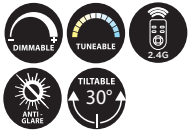
168



**LPSLO18 (7W/9W) | JIMMY FR
COB SPOTLIGHT | 120 L/W**

LED: BRIDGELUX | CRI > 80 | CCT: 3K/4K/6K
BEAM ANGLE: 15° / 24° / 36° / 55°
CUTOUT (MM): 55 Ø | SIZE (MM): 68 Ø* 77(H)
BODY COLOUR: WHITE / BLACK
REF. COLOUR: WHITE / BLACK / CHROME / TITANIUM
ROSE GOLD / GOLD
BODY: ALUMINIUM | WARRANTY: 2/3 YEARS
DIMMING: TRIAC / ANALOG / DALI
DRIVER: LUMEN PLUS / PHILIPS / FULHAM / BAG
MRP: ₹ XXXX /-

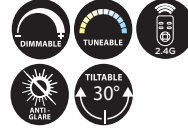
170



**LPSLO18 (15W / 18W) | JIMMY FR
COB SPOTLIGHT | 120 L/W**

LED: BRIDGELUX | CRI > 80 | CCT: 3K/4K/6K
BEAM ANGLE: 36°
CUTOUT (MM): 95 Ø | SIZE (MM): 110 Ø* 103(H)
BODY COLOUR: WHITE / BLACK
REF. COLOUR: WHITE / BLACK / CHROME / TITANIUM
ROSE GOLD / GOLD
BODY: ALUMINIUM | WARRANTY: 2/3 YEARS
DIMMING: TRIAC / ANALOG / DALI
DRIVER: LUMEN PLUS / PHILIPS / FULHAM / BAG
MRP: ₹ XXXX /-

169

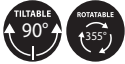


**LPSLO18 (12W) | JIMMY FR
COB SPOTLIGHT | 120 L/W**

LED: BRIDGELUX | CRI > 80 | CCT: 3K/4K/6K
BEAM ANGLE: 36°
CUTOUT (MM): 75 Ø | SIZE (MM): 85 Ø* 78(H)
BODY COLOUR: WHITE / BLACK
REF. COLOUR: WHITE / BLACK / CHROME / TITANIUM
ROSE GOLD / GOLD
BODY: ALUMINIUM | WARRANTY: 2/3 YEARS
DIMMING: TRIAC / ANALOG / DALI
DRIVER: LUMEN PLUS / PHILIPS / FULHAM / BAG
MRP: ₹ XXXX /-

LED TRACK LIGHTS & ACCESSORIES

171



**LPTL001 (12W) | ELITE
TRACK LIGHT | 120 L/W**

LED: TYF BRIDGELUX | CRI > 80 | CCT: 3K/4K/6K
BEAM ANGLE: 36° | SIZE (MM): 50 Ø* 100(H)
BODY COLOUR: WHITE / BLACK
BODY: ALUMINIUM | WARRANTY: 2 YEARS
DRIVER: LUMEN PLUS
MRP: ₹ XXXX /-

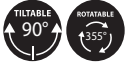
172



**LPTL001 (20W) | ELITE
TRACK LIGHT | 120 L/W**

LED: TYF BRIDGELUX | CRI > 80 | CCT: 3K/4K/6K
BEAM ANGLE: 36° | SIZE (MM): 60 Ø* 135(H)
BODY COLOUR: WHITE / BLACK
BODY: ALUMINIUM | WARRANTY: 2 YEARS
DRIVER: LUMEN PLUS
MRP: ₹ XXXX /-

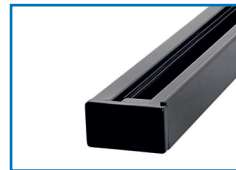
173



**LPTL001 (30W) | ELITE
TRACK LIGHT | 120 L/W**

LED: TYF BRIDGELUX | CRI > 80 | CCT: 3K/4K/6K
BEAM ANGLE: 36° | SIZE (MM): 80 Ø* 150(H)
BODY COLOUR: WHITE / BLACK
BODY: ALUMINIUM | WARRANTY: 2 YEARS
DRIVER: LUMEN PLUS
MRP: ₹ XXXX /-

174



**LPTRO01/002
TRACK RAIL**

SIZE (MM): 80 Ø* 150(H) | LENGTH: 1M/2M
BODY COLOUR: WHITE / BLACK
BODY: ALUMINIUM | WARRANTY: 2 YEARS
MRP: ₹ XXXX /-

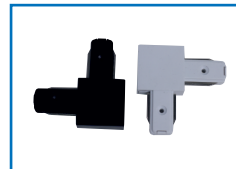
175



**TRACK I JOINTER
SUITABLE FOR LPTRO01/002**

SIZE (MM): 80 Ø* 150(H)
BODY COLOUR: WHITE / BLACK
BODY: ALUMINIUM | WARRANTY: 2 YEARS
MRP: ₹ XXXX /-

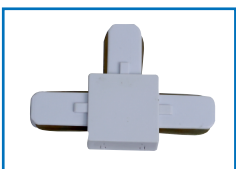
176



**TRACK L JOINTER
SUITABLE FOR LPTRO01/002**

SIZE (MM): 80 Ø* 150(H)
BODY COLOUR: WHITE / BLACK
BODY: ALUMINIUM | WARRANTY: 2 YEARS
MRP: ₹ XXXX /-

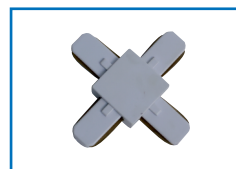
177



**TRACK T JOINTER
SUITABLE FOR LPTRO01/002**

SIZE (MM): 80 Ø* 150(H)
BODY COLOUR: WHITE / BLACK
BODY: ALUMINIUM | WARRANTY: 2 YEARS
MRP: ₹ XXXX /-

178



**TRACK PLUS (+) JOINTER
SUITABLE FOR LPTRO01/002**

SIZE (MM): 80 Ø* 150(H)
BODY COLOUR: WHITE / BLACK
BODY: ALUMINIUM
WARRANTY: 2 YEARS
MRP: ₹ XXXX /-

LED LAZER BLADE LIGHTS

179



**LPLB001 (3W) | MEDIAN
LAZER SPOT LIGHT | 120 L/W**

LED: OSRAM | CRI > 80 | CCT: 3K/4K/6K
BEAM ANGLE: 36° | CUTOUT (MM): 34X34
SIZE (MM): 44(L)X44(B)X40(H)
BODY COLOUR: WHITE / BLACK
BODY: ALUMINIUM | WARRANTY: 2/3 YEARS
DIMMING: TRIAC / ANALOG / DALI
DRIVER: LUMEN PLUS / PHILIPS / FULHAM / BAG
MRP: ₹ XXXX /-

180



**LPLB001 (5W) | MEDIAN
LAZER SPOT LIGHT | 120 L/W**

LED: OSRAM | CRI > 80 | CCT: 3K/4K/6K
BEAM ANGLE: 36° | CUTOUT (MM): 65X35
SIZE (MM): 74(L)X44(B)X40(H)
BODY COLOUR: WHITE / BLACK
BODY: ALUMINIUM | WARRANTY: 2/3 YEARS
DIMMING: TRIAC / ANALOG / DALI
DRIVER: LUMEN PLUS / PHILIPS / FULHAM / BAG
MRP: ₹ XXXX /-

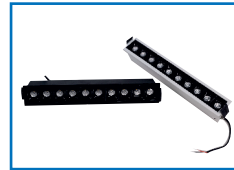
181



**LPLB001 (12W) | MEDIAN
LAZER SPOT LIGHT | 120 L/W**

LED: OSRAM | CRI > 80 | CCT: 3K/4K/6K
BEAM ANGLE: 36° | CUTOUT (MM): 137X35
SIZE (MM): 146(L)X44(B)X40(H)
BODY COLOUR: WHITE / BLACK
BODY: ALUMINIUM | WARRANTY: 2/3 YEARS
DIMMING: TRIAC / ANALOG / DALI
DRIVER: LUMEN PLUS / PHILIPS / FULHAM / BAG
MRP: ₹ XXXX /-

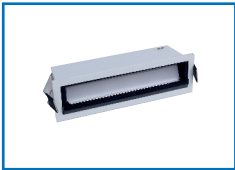
182



**LPLB001 (24W) | MEDIAN
LAZER SPOT LIGHT | 120 L/W**

LED: OSRAM | CRI > 80 | CCT: 3K/4K/6K
BEAM ANGLE: 36° | CUTOUT (MM): 271X35
SIZE (MM): 281(L)X44(B)X40(H)
BODY COLOUR: WHITE / BLACK
BODY: ALUMINIUM | WARRANTY: 2/3 YEARS
DIMMING: TRIAC / ANALOG / DALI
DRIVER: LUMEN PLUS / PHILIPS / FULHAM / BAG
MRP: ₹ XXXX /-

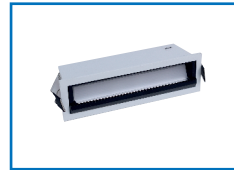
183



**LPLB001X (12W) | MEDIAN W.W.
LAZER SPOT LIGHT | 120 L/W**

LED: BRIDGELUX | CRI > 80 | CCT: 3K/4K/6K
BEAM ANGLE: 36° | CUTOUT (MM): 137X35
SIZE (MM): 146(L)X44(B)X40(H)
BODY COLOUR: WHITE / BLACK
BODY: ALUMINIUM | WARRANTY: 2/3 YEARS
DIMMING: TRIAC / ANALOG / DALI
DRIVER: LUMEN PLUS / PHILIPS / FULHAM / BAG
MRP: ₹ XXXX /-

184



**LPLB001X (24W) | MEDIAN W.W.
LAZER SPOT LIGHT | 120 L/W**

LED: BRIDGELUX | CRI > 80 | CCT: 3K/4K/6K
BEAM ANGLE: 36° | CUTOUT (MM): 271X35
SIZE (MM): 281(L)X44(B)X40(H)
BODY COLOUR: WHITE / BLACK
BODY: ALUMINIUM | WARRANTY: 2/3 YEARS
DIMMING: TRIAC / ANALOG / DALI
DRIVER: LUMEN PLUS / PHILIPS / FULHAM / BAG
MRP: ₹ XXXX /-

185



**LPLB002 (4W) | MAXIMUS
LAZER SPOT LIGHT | 120 L/W**

LED: OSRAM | CRI > 80 | CCT: 3K/4K/6K
BEAM ANGLE: 36° | CUTOUT (MM): 41X41
SIZE (MM): 51(L)X51(B)X55(H)
BODY COLOUR: WHITE / BLACK
BODY: ALUMINIUM | WARRANTY: 2/3 YEARS
DIMMING: TRIAC / ANALOG / DALI
DRIVER: LUMEN PLUS / PHILIPS / FULHAM / BAG
MRP: ₹ XXXX /-

186



**LPLB002 (12W) | MAXIMUS
LAZER SPOT LIGHT | 120 L/W**

LED: OSRAM | CRI > 80 | CCT: 3K/4K/6K
BEAM ANGLE: 36° | CUTOUT (MM): 118X42
SIZE (MM): 128(L)X50(B)X55(H)
BODY COLOUR: WHITE / BLACK
BODY: ALUMINIUM | WARRANTY: 2/3 YEARS
DIMMING: TRIAC / ANALOG / DALI
DRIVER: LUMEN PLUS / PHILIPS / FULHAM / BAG
MRP: ₹ XXXX /-

187



**LPLB002 (16W) | MAXIMUS
LAZER SPOT LIGHT | 120 L/W**

LED: OSRAM | CRI > 80 | CCT: 3K/4K/6K
BEAM ANGLE: 36° | CUTOUT (MM): 80X80
SIZE (MM): 90(L)X90(B)X55(H)
BODY COLOUR: WHITE / BLACK
BODY: ALUMINIUM | WARRANTY: 2/3 YEARS
DIMMING: TRIAC / ANALOG / DALI
DRIVER: LUMEN PLUS / PHILIPS / FULHAM / BAG
MRP: ₹ XXXX /-

188



**LPLB002 (20W) | MAXIMUS
LAZER SPOT LIGHT | 120 L/W**

LED: OSRAM | CRI > 80 | CCT: 3K/4K/6K
BEAM ANGLE: 36° | CUTOUT (MM): 195X42
SIZE (MM): 205(L)X90(B)X55(H)
BODY COLOUR: WHITE / BLACK
BODY: ALUMINIUM | WARRANTY: 2/3 YEARS
DIMMING: TRIAC / ANALOG / DALI
DRIVER: LUMEN PLUS / PHILIPS / FULHAM / BAG
MRP: ₹ XXXX /-

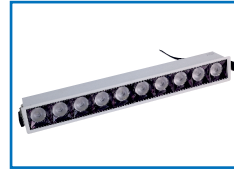
189



**LPLB002 (36W) | MAXIMUS
LAZER SPOT LIGHT | 120 L/W**

LED: OSRAM | CRI > 80 | CCT: 3K/4K/6K
BEAM ANGLE: 36° | CUTOUT (MM): 118X118
SIZE (MM): 128(L)X128(B)X55(H)
BODY COLOUR: WHITE / BLACK
BODY: ALUMINIUM | WARRANTY: 2/3 YEARS
DIMMING: TRIAC / ANALOG / DALI
DRIVER: LUMEN PLUS / PHILIPS / FULHAM / BAG
MRP: ₹ XXXX /-

190



**LPLB002 (40W) | MAXIMUS
LAZER SPOT LIGHT | 120 L/W**

LED: OSRAM | CRI > 80 | CCT: 3K/4K/6K
BEAM ANGLE: 36° | CUTOUT (MM): 985X42
SIZE (MM): 395(L)X52(B)X55(H)
BODY COLOUR: WHITE / BLACK
BODY: ALUMINIUM | WARRANTY: 2/3 YEARS
DIMMING: TRIAC / ANALOG / DALI
DRIVER: LUMEN PLUS / PHILIPS / FULHAM / BAG
MRP: ₹ XXXX /-

191



**LPLB005 (10W) | MEDIAN TR
TRIMLESS LAZER | 120 L/W**

LED: OSRAM | CRI > 80 | CCT: 3K/4K/6K
BEAM ANGLE: 30° | CUTOUT (MM): 145X41
SIZE (MM): 141(L)X91(B)X49(H)
BODY COLOUR: WHITE | REF. COLOUR: BLACK
BODY: ALUMINIUM | WARRANTY: 2/3 YEARS
DIMMING: TRIAC / ANALOG / DALI
DRIVER: LUMEN PLUS / PHILIPS / FULHAM / BAG
MRP: ₹ XXXX /-

192



**LPLB005 (20W) | MEDIAN TR
TRIMLESS LAZER | 120 L/W**

LED: OSRAM | CRI > 80 | CCT: 3K/4K/6K
BEAM ANGLE: 30° | CUTOUT (MM): 277X41
SIZE (MM): 274(L)X91(B)X49(H)
BODY COLOUR: WHITE | REF. COLOUR: BLACK
BODY: ALUMINIUM | WARRANTY: 2/3 YEARS
DIMMING: TRIAC / ANALOG / DALI
DRIVER: LUMEN PLUS / PHILIPS / FULHAM / BAG
MRP: ₹ XXXX /-

193



**LPLB006 (6W) | MEDIAN TL
TILTTABLE LAZER | 120 L/W**

LED: OSRAM | CRI > 80 | CCT: 3K/4K/6K
BEAM ANGLE: 24°/36° | CUTOUT (MM): 78X43
SIZE (MM): 84(L)X49(B)X44(H)
BODY COLOUR: WHITE / BLK | REF. COLOUR: BLACK
BODY: ALUMINIUM | WARRANTY: 2/3 YEARS
DIMMING: TRIAC / ANALOG / DALI
DRIVER: LUMEN PLUS / PHILIPS / FULHAM / BAG
MRP: ₹ XXXX /-

194



**LPLB006 (10W) | MEDIAN TL
TILTTABLE LAZER | 120 L/W**

LED: OSRAM | CRI > 80 | CCT: 3K/4K/6K
BEAM ANGLE: 24°/36° | CUTOUT (MM): 136X43
SIZE (MM): 141(L)X49(B)X44(H)
BODY COLOUR: WHITE / BLK | REF. COLOUR: BLACK
BODY: ALUMINIUM | WARRANTY: 2/3 YEARS
DIMMING: TRIAC / ANALOG / DALI
DRIVER: LUMEN PLUS / PHILIPS / FULHAM / BAG
MRP: ₹ XXXX /-

195



**LPLB006 (20W) | MEDIAN TL
TILTTABLE LAZER | 120 L/W**

LED: OSRAM | CRI > 80 | CCT: 3K/4K/6K
BEAM ANGLE: 24°/36° | CUTOUT (MM): 250X43
SIZE (MM): 255(L)X49(B)X44(H)
BODY COLOUR: WHITE / BLK | REF. COLOUR: BLACK
BODY: ALUMINIUM | WARRANTY: 2/3 YEARS
DIMMING: TRIAC / ANALOG / DALI
DRIVER: LUMEN PLUS / PHILIPS / FULHAM / BAG
MRP: ₹ XXXX /-

196



**LPLB007 (20W) | MEDIAN DOUBLE TL
TILTTABLE LAZER | 120 L/W**

LED: OSRAM | CRI > 80 | CCT: 3K/4K/6K
BEAM ANGLE: 24°/36° | CUTOUT (MM): 138X90
SIZE (MM): 147(L)X100(B)X44(H)
BODY COLOUR: WHITE / BLK | REF. COLOUR: BLACK
BODY: ALUMINIUM | WARRANTY: 2/3 YEARS
DIMMING: TRIAC / ANALOG / DALI
DRIVER: LUMEN PLUS / PHILIPS / FULHAM / BAG
MRP: ₹ XXXX /-

197

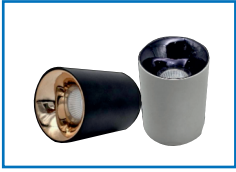


**LPLB007 (40W) | MEDIAN DOUBLE TL
TILTTABLE LAZER | 120 L/W**

LED: OSRAM | CRI > 80 | CCT: 3K/4K/6K
BEAM ANGLE: 24°/36° | CUTOUT (MM): 138X90
SIZE (MM): 147(L)X100(B)X44(H)
BODY COLOUR: WHITE / BLK | REF. COLOUR: BLACK
BODY: ALUMINIUM | WARRANTY: 2/3 YEARS
DIMMING: TRIAC / ANALOG / DALI
DRIVER: LUMEN PLUS / PHILIPS / FULHAM / BAG
MRP: ₹ XXXX /-

LED SURFACE LIGHTS

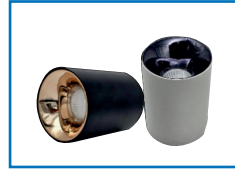
198



**LPS001 (7W) | FLASK
SURFACE SPOT | 120 L/W**

LED: TYF BRIDGELUX | CRI > 80 | CCT: 3K/4K/6K
BEAM ANGLE: 24° | SIZE (MM): 55 Ø X 80(H)
BODY COLOUR: WHITE / BLK
REF. COLOUR: TITANIUM / COPPER / WHITE
BODY: ALUMINIUM | WARRANTY: 2 YEARS
DRIVER: LUMEN PLUS
MRP: ₹ XXXX /-

199



**LPS001 (12W) | FLASK
SURFACE SPOT | 120 L/W**

LED: TYF BRIDGELUX | CRI > 80 | CCT: 3K/4K/6K
BEAM ANGLE: 36° | SIZE (MM): 70 Ø X 100(H)
BODY COLOUR: WHITE / BLK
REF. COLOUR: TITANIUM / COPPER / WHITE
BODY: ALUMINIUM | WARRANTY: 2 YEARS
DRIVER: LUMEN PLUS
MRP: ₹ XXXX /-

200



**LPS001 (18W) | FLASK
SURFACE SPOT | 120 L/W**

LED: TYF BRIDGELUX | CRI > 80 | CCT: 3K/4K/6K
BEAM ANGLE: 36° | SIZE (MM): 85 Ø X 120(H)
BODY COLOUR: WHITE / BLK
REF. COLOUR: TITANIUM / COPPER / WHITE
BODY: ALUMINIUM | WARRANTY: 2 YEARS
DRIVER: LUMEN PLUS
MRP: ₹ XXXX /-

201



**LPS002 (12W) | TILT
SURFACE SPOT | 120 L/W**

LED: TYF BRIDGELUX | CRI > 80 | CCT: 3K/4K/6K
BEAM ANGLE: 24° | SIZE (MM): 100 Ø X 100(H)
BODY COLOUR: WHITE / BLK
BODY: ALUMINIUM | WARRANTY: 2 YEARS
DRIVER: LUMEN PLUS
MRP: ₹ XXXX /-

202



**LPS004 (12W) | LONG
SURFACE SPOT | 120 L/W**

LED: CREE | CRI > 80 | CCT: 3K/4K/6K
BEAM ANGLE: 24° | SIZE (MM): 35 Ø X 280(H)
BODY COLOUR: WHITE
BODY: ALUMINIUM | WARRANTY: 3 YEARS
DRIVER: LUMEN PLUS
MRP: ₹ XXXX /-

203



**LPS005 (6W) | INFINITY
SURFACE DOWNLIGHT | 120 L/W**

LED: BRIDGELUX | CRI > 80 | CCT: 3K/4K/6K
BEAM ANGLE: 120° | SIZE (MM): 90 Ø X 27(H)
BODY COLOUR: WHITE | BODY: PC
DRIVER: DOB | WARRANTY: 2 YEARS
MRP: ₹ XXXX /-

204



**LPS005 (12W) | INFINITY
SURFACE DOWNLIGHT | 120 L/W**

LED: BRIDGELUX | CRI > 80 | CCT: 3K/4K/6K
BEAM ANGLE: 120° | SIZE (MM): 120 Ø X 27(H)
BODY COLOUR: WHITE | BODY: PC
DRIVER: DOB | WARRANTY: 2 YEARS
MRP: ₹ XXXX /-

205



**LPS005 (18W) | INFINITY
SURFACE DOWNLIGHT | 120 L/W**

LED: BRIDGELUX | CRI > 80 | CCT: 3K/4K/6K
BEAM ANGLE: 120° | SIZE (MM): 155 Ø X 27(H)
BODY COLOUR: WHITE | BODY: PC
DRIVER: DOB | WARRANTY: 2 YEARS
MRP: ₹ XXXX /-

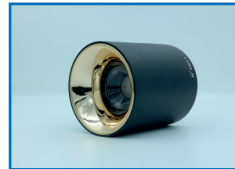
206



**LPS005 (24W) | INFINITY
SURFACE DOWNLIGHT | 120 L/W**

LED: BRIDGELUX | CRI > 80 | CCT: 3K/4K/6K
BEAM ANGLE: 120° | SIZE (MM): 190 Ø X 27(H)
BODY COLOUR: WHITE | BODY: PC
DRIVER: DOB | WARRANTY: 2 YEARS
MRP: ₹ XXXX /-

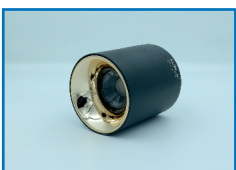
207



**LPS009R (7W) | JAZZ SF
SURFACE SPOT | 120 L/W**

LED: TYF BRIDGELUX | CRI > 80 | CCT: 3K/4K/6K
BEAM ANGLE: 36° | SIZE (MM): 54 Ø X 75(H)
BODY COLOUR: WHITE / BLACK | BODY: ALUMINIUM
REF. COLOUR: WHITE / BLACK / TITANIUM / ROSEGOLD / CHROME / MATT SILVER
DRIVER: LUMEN PLUS | WARRANTY: 2 YEARS
MRP: ₹ XXXX /-

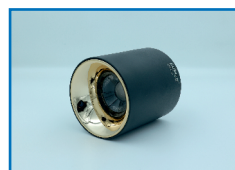
208



**LPS009R (12W) | JAZZ SF
SURFACE SPOT | 120 L/W**

LED: TYF BRIDGELUX | CRI > 80 | CCT: 3K/4K/6K
BEAM ANGLE: 36° | SIZE (MM): 75 Ø X 83(H)
BODY COLOUR: WHITE / BLACK | BODY: ALUMINIUM
REF. COLOUR: WHITE / BLACK / TITANIUM / ROSEGOLD / CHROME / MATT SILVER
DRIVER: LUMEN PLUS | WARRANTY: 2 YEARS
MRP: ₹ XXXX /-

209



**LPS009R (18W) | JAZZ SF
SURFACE SPOT | 120 L/W**

LED: TYF BRIDGELUX | CRI > 80 | CCT: 3K/4K/6K
BEAM ANGLE: 36° | SIZE (MM): 96 Ø X 95(H)
BODY COLOUR: WHITE / BLACK | BODY: ALUMINIUM
REF. COLOUR: WHITE / BLACK / TITANIUM / ROSEGOLD / CHROME / MATT SILVER
DRIVER: LUMEN PLUS | WARRANTY: 2 YEARS
MRP: ₹ XXXX /-

LED IP65 SURFACE LIGHTS

210



**LPSS006 (12W) | ELLA
SURFACE SPOT | 120 L/W**

LED: TYF BRIDGELUX | CRI > 80 | CCT: 3K/4K/6K
BEAM ANGLE: 36° | SIZE (MM): 75 Ø X 100(H)
BODY COLOUR: BLACK | REF. COLOUR: BLACK
BODY: ALUMINIUM | WARRANTY: 2 YEARS
DRIVER: LUMEN PLUS
MRP: ₹ XXXX /-

211



**LPSS006 (20W) | ELLA
SURFACE SPOT | 120 L/W**

LED: TYF BRIDGELUX | CRI > 80 | CCT: 3K/4K/6K
BEAM ANGLE: 36° | SIZE (MM): 95 Ø X 100(H)
BODY COLOUR: BLACK | REF. COLOUR: BLACK
BODY: ALUMINIUM | WARRANTY: 2 YEARS
DRIVER: LUMEN PLUS
MRP: ₹ XXXX /-

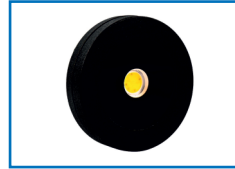
212



**LPSS006 (30W) | ELLA
SURFACE SPOT | 120 L/W**

LED: TYF BRIDGELUX | CRI > 80 | CCT: 3K/4K/6K
BEAM ANGLE: 36° | SIZE (MM): 115 Ø X 152(H)
BODY COLOUR: BLACK | REF. COLOUR: BLACK
BODY: ALUMINIUM | WARRANTY: 2 YEARS
DRIVER: LUMEN PLUS
MRP: ₹ XXXX /-

213



**LP00006 (5W) | STRIKE
SURFACE SPOT | 90 L/W**

LED: EPISTAR | CRI > 80 | CCT: 3K
BEAM ANGLE: 36° | SIZE (MM): 115 Ø X 152(H)
BODY COLOUR: BLACK | REF. COLOUR: BLACK
BODY: ALUMINIUM | WARRANTY: 2 YEARS
DRIVER: LUMEN PLUS (DOB)
MRP: ₹ XXXX /-

LED FOOT LIGHTS

214



**LPFT001 (3W) | BLOOM | IP65
2 MODULE FOOT LIGHT | 80 L/W**

LED: EPISTAR | CRI > 80 | CCT: 3K
SIZE (MM): 75 X 75
BODY COLOUR: BLACK / WHITE
BODY: ALUMINIUM | WARRANTY: 1 YEARS
DRIVER: LUMEN PLUS
MRP: ₹ XXXX /-

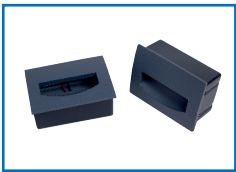
215



**LPFT002 (5W) | FLORET | IP65
80 MM FOOT LIGHT | 80 L/W**

LED: EPISTAR | CRI > 80 | CCT: 3K
SIZE (MM): 80 X 80
BODY COLOUR: ANTHRACITE GREY
BODY: ALUMINIUM | WARRANTY: 1 YEARS
DRIVER: LUMEN PLUS
MRP: ₹ XXXX /-

216



**LPFT003 (5W) | ANDY | IP65
3 MODULE FOOT LIGHT | 80 L/W**

LED: EPISTAR | CRI > 80 | CCT: 3K
SIZE (MM): XXXX
BODY COLOUR: ANTHRACITE GREY
BODY: ALUMINIUM | WARRANTY: 1 YEARS
DRIVER: LUMEN PLUS
MRP: ₹ XXXX /-

217



**LPFT004 (3W) | LUMIRING | IP20
ROUND FOOT LIGHT | 80 L/W**

LED: CREE | CRI > 80 | CCT: 3K
SIZE (MM): XXXX
BODY COLOUR: WHITE / BLACK
BODY: ALUMINIUM | WARRANTY: 1 YEARS
DRIVER: LUMEN PLUS
MRP: ₹ XXXX /-

218



**LPFT005 (3W) | LUMORING | IP20
ROUND FOOT LIGHT | 80 L/W**

LED: CREE | CRI > 80 | CCT: 3K
SIZE (MM): XXXX
BODY COLOUR: WHITE / BLACK
BODY: ALUMINIUM | WARRANTY: 1 YEARS
DRIVER: LUMEN PLUS
MRP: ₹ XXXX /-

219



**LPFT006 (3W) | LYTH | IP65
FOOT LIGHT | 80 L/W**

LED: CREE | CRI > 80 | CCT: 3K
SIZE (MM): 59(B)*104(L)*53(H)
BODY COLOUR: BLACK
BODY: ALUMINIUM | WARRANTY: 1 YEARS
DRIVER: LUMEN PLUS
MRP: ₹ XXXX /-

220



**LPFT007 (3W) | BEAMER | IP65
FOOT LIGHT | 80 L/W**

LED: CREE | CRI > 80 | CCT: 3K
SIZE (MM): 60(B)*210(L)*54(H)
BODY COLOUR: BLACK
BODY: ALUMINIUM | WARRANTY: 1 YEARS
DRIVER: LUMEN PLUS
MRP: ₹ XXXX /-

LED IP65 WALL LIGHTS

221



NEW



**LPOD201 (12W) | ALCOR
WALL LIGHT | 100 L/W**

LED: BRIDGELUX | CRI > 80 | CCT: 3K
SIZE (MM): 192(D) X 155(W) X 235(H)
BODY COLOUR: GREY | BODY: ALUMINIUM
WARRANTY: 2 YEARS | DRIVER: LUMEN PLUS
MRP: ₹ XXXX /-

222



NEW



**LPOD202 (12W) | ADHARA
WALL LIGHT | 100 L/W**

LED: BRIDGELUX | CRI > 80 | CCT: 3K
SIZE (MM): 240(D) X 155(W) X 175(H)
BODY COLOUR: GREY | BODY: ALUMINIUM
WARRANTY: 2 YEARS | DRIVER: LUMEN PLUS
MRP: ₹ XXXX /-

223



NEW



**LPOD203 (12W) | ACRUX
WALL LIGHT | 100 L/W**

LED: BRIDGELUX | CRI > 80 | CCT: 3K
SIZE (MM): 195(D) X 172(W) X 240(H)
BODY COLOUR: GREY | BODY: ALUMINIUM
WARRANTY: 2 YEARS | DRIVER: LUMEN PLUS
MRP: ₹ XXXX /-

224



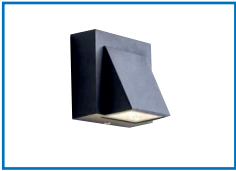
NEW



**LPOD204 (12W) | ALIOTH
WALL LIGHT | 100 L/W**

LED: BRIDGELUX | CRI > 80 | CCT: 3K
SIZE (MM): 255(D) X 172(W) X 175(H)
BODY COLOUR: GREY | BODY: ALUMINIUM
WARRANTY: 2 YEARS | DRIVER: LUMEN PLUS
MRP: ₹ XXXX /-

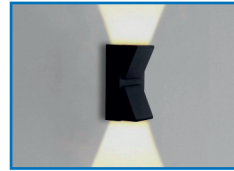
225



**LPOD008 (3W) | ETHOS | 1 WAY
WALL LIGHT | 90 L/W**

LED: EPISTAR | CRI > 80 | CCT: 3K
SIZE (MM): XXXX
BODY COLOUR: BLACK | BODY: ALUMINIUM
WARRANTY: 1 YEARS | DRIVER: LUMEN PLUS
MRP: ₹ XXXX /-

226



**LPOD008 (6W) | ETHOS | 2 WAY
WALL LIGHT | 90 L/W**

LED: EPISTAR | CRI > 80 | CCT: 3K
SIZE (MM): XXXX
BODY COLOUR: BLACK | BODY: ALUMINIUM
WARRANTY: 1 YEARS | DRIVER: LUMEN PLUS
MRP: ₹ XXXX /-

227



**LPOD010 (6W) | CELLO
WALL LIGHT | 90 L/W**

LED: EPISTAR | CRI > 80 | CCT: 3K
SIZE (MM): XXXX
BODY COLOUR: BLACK | BODY: ALUMINIUM
WARRANTY: 1 YEARS | DRIVER: LUMEN PLUS
MRP: ₹ XXXX /-

228



**LPOD010 (12W) | CELLO
WALL LIGHT | 90 L/W**

LED: EPISTAR | CRI > 80 | CCT: 3K
SIZE (MM): XXXX
BODY COLOUR: BLACK | BODY: ALUMINIUM
WARRANTY: 1 YEARS | DRIVER: LUMEN PLUS
MRP: ₹ XXXX /-

229



**LPOD010 (18W) | CELLO
WALL LIGHT | 90 L/W**

LED: EPISTAR | CRI > 80 | CCT: 3K
SIZE (MM): XXXX
BODY COLOUR: BLACK | BODY: ALUMINIUM
WARRANTY: 1 YEARS | DRIVER: LUMEN PLUS
MRP: ₹ XXXX /-

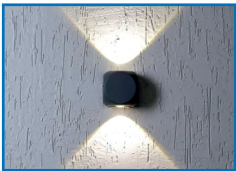
230



**LPOD014 (3W) | ETRO | 1 WAY
WALL LIGHT | 90 L/W**

LED: LEDTEEN | CRI > 80 | CCT: 3K
SIZE (MM): XXXX
BODY COLOUR: BLACK | BODY: ALUMINIUM
WARRANTY: 1 YEARS | DRIVER: LUMEN PLUS
MRP: ₹ XXXX /-

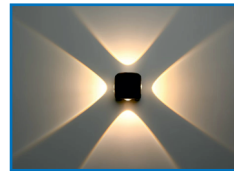
231



**LPOD014 (6W) | ETRO | 2 WAY
WALL LIGHT | 90 L/W**

LED: LEDTEEN | CRI > 80 | CCT: 3K
SIZE (MM): XXXX
BODY COLOUR: BLACK | BODY: ALUMINIUM
WARRANTY: 1 YEARS | DRIVER: LUMEN PLUS
MRP: ₹ XXXX /-

232



**LPOD014 (12W) | ETRO | 4 WAY
WALL LIGHT | 90 L/W**

LED: LEDTEEN | CRI > 80 | CCT: 3K
SIZE (MM): XXXX
BODY COLOUR: BLACK | BODY: ALUMINIUM
WARRANTY: 1 YEARS | DRIVER: LUMEN PLUS
MRP: ₹ XXXX /-

233



NEW



**LPOD205 (10W) | TRIOS
WALL LIGHT | 90 L/W**

LED: BRIDGELUX | CRI > 80 | CCT: 3K
SIZE (MM): 65(D)*60(W)*155(H)
BODY COLOUR: BLACK | BODY: ALUMINIUM
WARRANTY: 1 YEARS | DRIVER: LUMEN PLUS
MRP: ₹ XXXX /-

234



NEW



**LPOD206 (2W) | EPIC
WALL LIGHT | 90 L/W**

LED: BRIDGELUX | CRI > 80 | CCT: 3K
SIZE (MM): 42(D)*120(W)*100(H)
BODY COLOUR: BLACK+GOLD | BODY: ALUMINIUM
WARRANTY: 1 YEARS | DRIVER: LUMEN PLUS
MRP: ₹ XXXX /-

235



NEW



**LPOD206 (4W) | EPIC
WALL LIGHT | 90 L/W**

LED: BRIDGELUX | CRI > 80 | CCT: 3K
SIZE (MM): 35(D)*130(W)*100(H)
BODY COLOUR: BLACK+GOLD | BODY: ALUMINIUM
WARRANTY: 1 YEARS | DRIVER: LUMEN PLUS
MRP: ₹ XXXX /-

236



NEW



**LPOD206 (6W) | EPIC
WALL LIGHT | 90 L/W**

LED: BRIDGELUX | CRI > 80 | CCT: 3K
SIZE (MM): 35(D)*180(W)*100(H)
BODY COLOUR: BLACK+GOLD | BODY: ALUMINIUM
WARRANTY: 1 YEARS | DRIVER: LUMEN PLUS
MRP: ₹ XXXX /-

237



NEW



**LPOD207 (6W) | RYAN | 2 WAY
WALL LIGHT | 90 L/W**

LED: BRIDGELUX | CRI > 80 | CCT: 3K
SIZE (MM): 100 Ø
BODY COLOUR: BLACK | BODY: ALUMINIUM
WARRANTY: 1 YEARS | DRIVER: LUMEN PLUS
MRP: ₹ XXXX /-

238



NEW



**LPOD207 (12W) | RYAN | 4 WAY
WALL LIGHT | 90 L/W**

LED: BRIDGELUX | CRI > 80 | CCT: 3K
SIZE (MM): 100 Ø
BODY COLOUR: BLACK | BODY: ALUMINIUM
WARRANTY: 1 YEARS | DRIVER: LUMEN PLUS
MRP: ₹ XXXX /-

239



NEW



**LPOD208 (3W) | SILO RD | 1 WAY
WALL LIGHT | 90 L/W**

LED: BRIDGELUX | CRI > 80 | CCT: 3K
SIZE (MM): 68(D)*80(H)
BODY COLOUR: BLACK | BODY: ALUMINIUM
WARRANTY: 1 YEARS | DRIVER: LUMEN PLUS
MRP: ₹ XXXX /-

240



NEW



**LPOD208 (10W) | SILO RD | 2 WAY
WALL LIGHT | 90 L/W**

LED: BRIDGELUX | CRI > 80 | CCT: 3K
SIZE (MM): 68(D)*150(H)
BODY COLOUR: BLACK | BODY: ALUMINIUM
WARRANTY: 1 YEARS | DRIVER: LUMEN PLUS
MRP: ₹ XXXX /-

241



NEW



**LPOD209 (3W) | SILO SQ | 1 WAY
WALL LIGHT | 90 L/W**

LED: BRIDGELUX | CRI > 80 | CCT: 3K
SIZE (MM): 68(D)*80(W)*80(H)
BODY COLOUR: BLACK | BODY: ALUMINIUM
WARRANTY: 1 YEARS | DRIVER: LUMEN PLUS
MRP: ₹ XXXX /-

242



NEW



**LPOD209 (10W) | SILO SQ | 2 WAY
WALL LIGHT | 90 L/W**

LED: BRIDGELUX | CRI > 80 | CCT: 3K
SIZE (MM): 68(D)*80(W)*150(H)
BODY COLOUR: BLACK | BODY: ALUMINIUM
WARRANTY: 1 YEARS | DRIVER: LUMEN PLUS
MRP: ₹ XXXX /-

243



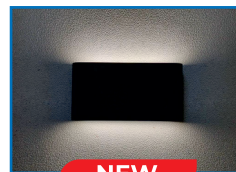
NEW



**LPOD210 (2W) | SLEEK | 2 WAY
WALL LIGHT | 90 L/W**

LED: BRIDGELUX | CRI > 80 | CCT: 3K
SIZE (MM): 65(D)*30(W)*XXXX(H)
BODY COLOUR: GREY | BODY: ALUMINIUM
WARRANTY: 1 YEARS | DRIVER: LUMEN PLUS
MRP: ₹ XXXX /-

244



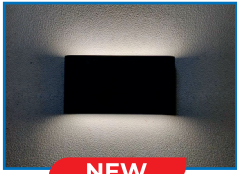
NEW



**LPOD211 (6W) | FLUSH | 2 WAY
WALL LIGHT | 90 L/W**

LED: BRIDGELUX | CRI > 80 | CCT: 3K
SIZE (MM): 30(D)*110(W)*90(H)
BODY COLOUR: GREY | BODY: ALUMINIUM
WARRANTY: 1 YEARS | DRIVER: LUMEN PLUS
MRP: ₹ XXXX /-

245



NEW



**LPOD211 (12W) | FLUSH | 2 WAY
WALL LIGHT | 90 L/W**

LED: BRIDGELUX | CRI > 80 | CCT: 3K
SIZE (MM): 30(D)*175(W)*90(H)
BODY COLOUR: GREY | BODY: ALUMINIUM
WARRANTY: 1 YEARS | DRIVER: LUMEN PLUS
MRP: ₹ XXXX /-

246



NEW



**LPOD012 (5/8W) | ALBERTA | 1 WAY
WALL LIGHT | 90 L/W**

LED: BRIDGELUX | CRI > 80 | CCT: 3K
SIZE (MM): 40(D)*90(W)*40(H)
SIZE (MM): 40(D)*150(W)*40(H)
BODY COLOUR: BLACK | BODY: ALUMINIUM
WARRANTY: 1 YEARS | DRIVER: LUMEN PLUS
MRP: ₹ XXXX /-

LED SPIKE LIGHTS

247



**LPSP001 (6W) | ALBA (WITH HOOD)
SPIKE LIGHT | 90 L/W**

LED: BRIDGELUX | CRI > 80 | CCT: 3K
SIZE (MM): XX(D)*XX(H)
BODY COLOUR: BLACK | BODY: ALUMINIUM
WARRANTY: 1 YEARS | DRIVER: LUMEN PLUS
MRP: ₹ XXXX /-

248



**LPSP002 (15W) | ELSA (WITH HOOD)
SPIKE LIGHT | 90 L/W**

LED: BRIDGELUX | CRI > 80 | CCT: 3K
SIZE (MM): XX(D)*XX(H)
BODY COLOUR: BLACK | BODY: ALUMINIUM
WARRANTY: 1 YEARS | DRIVER: LUMEN PLUS
MRP: ₹ XXXX /-

249



NEW



**LPSP003 (3W) | POSH
PILLAR HIGHLIGHTER | 90 L/W**

LED: BRIDGELUX | CRI > 80 | CCT: 3K
SIZE (MM): 42 Ø *94(H)
BODY COLOUR: GREY | BODY: ALUMINIUM
WARRANTY: 1 YEARS | DRIVER: LUMEN PLUS
MRP: ₹ XXXX /-

250



NEW



**LPSP003 (12W) | POSH
PILLAR HIGHLIGHTER | 90 L/W**

LED: BRIDGELUX | CRI > 80 | CCT: 3K
SIZE (MM): 70 Ø *135(H)
BODY COLOUR: GREY | BODY: ALUMINIUM
WARRANTY: 1 YEARS | DRIVER: LUMEN PLUS
MRP: ₹ XXXX /-

LED WALL WASHER LIGHTS (IP65)

251



**LPOD101A (11W) | USHER 300MM
WALL WASHER | 90 L/W**

LED: BRIDGELUX | CRI > 80 | CCT: 3K / RGB
SIZE (MM): 300(L)*35(B)*70(H) | BEAM ANGLE: 15°
BODY COLOUR: GREY | BODY: ALUMINIUM
WARRANTY: 1 YEARS | DRIVER: LUMEN PLUS
MRP: ₹ XXXX /-

252



**LPOD101B (21W) | USHER 600MM
WALL WASHER | 90 L/W**

LED: BRIDGELUX | CRI > 80 | CCT: 3K / RGB
SIZE (MM): 600(L)*35(B)*70(H) | BEAM ANGLE: 15°
BODY COLOUR: GREY | BODY: ALUMINIUM
WARRANTY: 1 YEARS | DRIVER: LUMEN PLUS
MRP: ₹ XXXX /-

253



**LPOD101C (33W) | USHER 900MM
WALL WASHER | 90 L/W**

LED: BRIDGELUX | CRI > 80 | CCT: 3K / RGB
SIZE (MM): 900(L)*35(B)*70(H) | BEAM ANGLE: 15°
BODY COLOUR: GREY | BODY: ALUMINIUM
WARRANTY: 1 YEARS | DRIVER: LUMEN PLUS
MRP: ₹ XXXX /-

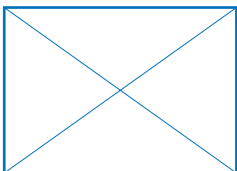
254



**LPOD101D (44W) | USHER 1200MM
WALL WASHER | 90 L/W**

LED: BRIDGELUX | CRI > 80 | CCT: 3K / RGB
SIZE (MM): 1200(L)*35(B)*70(H) | BEAM ANGLE: 15°
BODY COLOUR: GREY | BODY: ALUMINIUM
WARRANTY: 1 YEARS | DRIVER: LUMEN PLUS
MRP: ₹ XXXX /-

255



**LPOD101SLIDER
WALL WASHER BAFFLE**

SIZE (MM): 1200(L)*35(B)*70(H)
BODY COLOUR: GREY | BODY: ALUMINIUM
MRP: ₹ XXXX /-

*LED WALL WASHERS CAN BE CUSTOMIZED UPTO 12 FEET LENGTHS
*ALSO AVAILABLE IN DMX CONTROL OPTIONS

LED STRIP LIGHTS

12V LED STRIPS

256



LPFS-12V-60LED-8MM 60LED (6W/MTR)

IP RATING : IP20 | PCB THICKNESS: 20Z
LED TYPE : 2835 | CRI > 80 | PCB WIDTH: 8MM
LENGTH: 5 METRE | WARRANTY: 2 YEARS
CCT: 3K/4K/6K/R/G/B
MRP: ₹ XXXX /-

257



LPFS-12V-120LED-8MM 120LED (12W/MTR)

IP RATING : IP20 | PCB THICKNESS: 20Z
LED TYPE : 2835 | CRI > 80 | PCB WIDTH: 8MM
LENGTH: 5 METRE | WARRANTY: 2 YEARS
CCT: 2.7K/ 3K / 4K / 5K/ 6K / R / G / B / PINK /
ICE BLUE / AMBER
MRP: ₹ XXXX /-

258



LPFS-12V-120LED-5MM 120LED (12W/MTR)

IP RATING : IP20 | PCB THICKNESS: 20Z
LED TYPE : 2835 | CRI > 80 | PCB WIDTH: 5MM
LENGTH: 5 METRE | WARRANTY: 2 YEARS
CCT: 2.7K/3K/4K/5K/6K
MRP: ₹ XXXX /-

259



LPFS-12V-180LED-10MM 180LED (18W/MTR)

IP RATING : IP20 | PCB THICKNESS: 20Z
LED TYPE : 2835 | CRI > 80 | PCB WIDTH: 10MM
LENGTH: 5 METRE | WARRANTY: 2 YEARS
CCT: 2.7K/3K/4K/5K/6K
MRP: ₹ XXXX /-

260



LPFS-12V-180LED-5MM 180LED (15W/MTR)

IP RATING : IP20 | PCB THICKNESS: 20Z
LED TYPE : 2835 | CRI > 80 | PCB WIDTH: 5MM
LENGTH: 5 METRE | WARRANTY: 2 YEARS
CCT: 3K/4K/6K
MRP: ₹ XXXX /-

261



LPFS-12V-240LED-10MM 240LED (22W/MTR)

IP RATING : IP20 | PCB THICKNESS: 20Z
LED TYPE : 2835 | CRI > 80 | PCB WIDTH: 10MM
LENGTH: 5 METRE | WARRANTY: 2 YEARS
CCT: 2.7K/3K/4K/5K/6K
MRP: ₹ XXXX /-

CCT TUNEABLE + DIMMABLE LED STRIPS

262



LPFS-12V-120LED-8MM-3IN1 120LED (9W/MTR)

IP RATING : IP20 | PCB THICKNESS: 20Z
LED TYPE : 2835 | CRI > 80 | PCB WIDTH: 8MM
LENGTH: 5 METRE | WARRANTY: 2 YEARS
CCT: 2700 - 6000K
MRP: ₹ XXXX /-

263



LPFS-12V-180LED-10MM-3IN1 180LED (14W/MTR)

IP RATING : IP20 | PCB THICKNESS: 20Z
LED TYPE : 2835 | CRI > 80 | PCB WIDTH: 10MM
LENGTH: 5 METRE | WARRANTY: 2 YEARS
CCT: 2700 - 6000K
MRP: ₹ XXXX /-

264

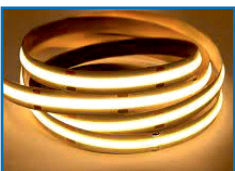


LPFS-12V-24LED-10MM-3IN1 240LED (18W/MTR)

IP RATING : IP20 | PCB THICKNESS: 20Z
LED TYPE : 2835 | CRI > 80 | PCB WIDTH: 10MM
LENGTH: 5 METRE | WARRANTY: 2 YEARS
CCT: 2700 - 6000K
MRP: ₹ XXXX /-

COB LED STRIPS

265



LPFS-12V-320COB 320LED (10W/MTR)

IP RATING : IP20 | PCB THICKNESS: 2.5 OZ
LED TYPE : 2835 | CRI > 80 | PCB WIDTH: 8MM
LENGTH: 5 METRE | WARRANTY: 2 YEARS
CCT: 3K/4K/6.5K
MRP: ₹ XXXX /-

266



60 LED RGB STRIP

60LED (15W/MTR)

IP RATING : IP20 | PCB THICKNESS: 2.50Z
LED TYPE : 5050 | CRI > 80 | PCB WIDTH: 10MM
CCT: RGB | WARRANTY: 2 YEARS
LENGTH: 5 METRE
MRP: ₹ XXXX /-

WATERPROOF STRIPS (IP65)

267



LPFS-12V-120LED-8MM

120LED (12W/MTR)

IP RATING : IP65 | PCB THICKNESS: 20Z
LED TYPE : 2835 | CRI > 80 | PCB WIDTH: 5MM
LENGTH: 5 METRE | WARRANTY: 1 YEARS
CCT: 3K
MRP: ₹ XXXX /-

268



LPFS-12V-120LED-5MM

120LED (12W/MTR)

IP RATING : IP65 | PCB THICKNESS: 20Z
LED TYPE : 2835 | CRI > 80 | PCB WIDTH: 5MM
LENGTH: 5 METRE | WARRANTY: 1 YEARS
CCT: 3K
MRP: ₹ XXXX /-

269



LPFS-12V-180LED-5MM

180LED (15W/MTR)

IP RATING : IP65 | PCB THICKNESS: 20Z
LED TYPE : 2835 | CRI > 80 | PCB WIDTH: 5MM
LENGTH: 5 METRE | WARRANTY: 1 YEARS
CCT: 3K
MRP: ₹ XXXX /-

270



LPFS-12V-240LED-10MM

240LED (22W/MTR)

IP RATING : IP65 | PCB THICKNESS: 20Z
LED TYPE : 2835 | CRI > 80 | PCB WIDTH: 5MM
LENGTH: 5 METRE | WARRANTY: 1 YEARS
CCT: 3K
MRP: ₹ XXXX /-

24V LED STRIPS

271



LPFS-24V-120LED-8MM

120LED (12W/MTR)

IP RATING : IP20 | PCB THICKNESS: 20Z
CRI > 80 | PCB WIDTH: 8MM
LENGTH: 5 METRE | WARRANTY: 2 YEARS
CCT: 2.7K/3K/4K/5K/6K
MRP: ₹ XXXX /-

272



LPFS-24V-120LED-5MM

120LED (12W/MTR)

IP RATING : IP20 | PCB THICKNESS: 20Z
CRI > 80 | PCB WIDTH: 5MM
LENGTH: 5 METRE | WARRANTY: 2 YEARS
CCT: 2.7K/3K/4K/5K/6K
MRP: ₹ XXXX /-

273



LPFS-24V-180LED-10MM

180LED (18W/MTR)

IP RATING : IP20 | PCB THICKNESS: 20Z
CRI > 80 | PCB WIDTH: 10MM
LENGTH: 5 METRE | WARRANTY: 2 YEARS
CCT: 3K/4K/6K
MRP: ₹ XXXX /-

274



LPFS-24V-240LED-10MM

240LED (22W/MTR)

IP RATING : IP65 | PCB THICKNESS: 20Z
CRI > 80 | PCB WIDTH: 10MM
LENGTH: 5 METRE | WARRANTY: 1 YEARS
CCT: 2.7K/3K/4K/5K/6K
MRP: ₹ XXXX /-

DROPLESS LED STRIPS - 20MTR ROLL

275



LPFS-24V-120LED-DROPLESS

120LED (10W/MTR)

IP RATING : IP20 | PCB THICKNESS: 60Z
LED TYPE : 2835 | CRI > 80 | PCB WIDTH: 12MM
CCT: 3K/4K/6K | WARRANTY: 1 YEARS
LENGTH: 20 METRE
MRP: ₹ XXXX /-

COB LED STRIPS

276



LPFS-24V-480LED-COB

480LED (15W/MTR)

IP RATING : IP20 | PCB THICKNESS: 30Z
CRI > 80 | PCB WIDTH: 10MM
LENGTH: 5 METRE | WARRANTY: 2 YEARS
CCT: 3K/4K/6K
MRP: ₹ XXXX /-

CCT TUNEABLE + DIMMABLE LED STRIPS

277



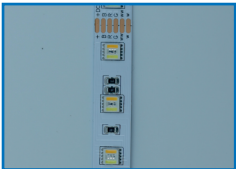
240 LED STRIP

240LED (18W/MTR)

IP RATING : IP20 | PCB THICKNESS: 20Z
LED TYPE : 2835 | CRI > 80 | PCB WIDTH: 10MM
LENGTH: 5 METRE | WARRANTY: 2 YEARS
CCT: 2700 - 6000K
MRP: ₹ XXXX /-

RGB+CCT LED STRIP

278



60 LED RGB CCT STRIP

60LED (15W/MTR)

IP RATING : IP20 | PCB THICKNESS: 30Z
LED TYPE : 5050 | CRI > 80 | PCB WIDTH: 12MM
LENGTH: 5 METRE | WARRANTY: 2 YEARS
CCT: RGB + CW + WW
MRP: ₹ XXXX /-

12V ULTRA SLIM SMPS

279



RS8025 | 12V ECO SMPS

24W

AMPERE: 2A SMPS | VOLTAGE: 12V
SIZE: 95(L)*29(B)*22(H)
WARRANTY: 2 YEARS
MRP: ₹ XXXX /-

280



RS8036 | 12V ECO SMPS

36W

AMPERE: 3A SMPS | VOLTAGE: 12V
SIZE: 135(L)*34(B)*22(H)
WARRANTY: 2 YEARS
MRP: ₹ XXXX /-

281



US9060 | 12V ECO SMPS

60W

AMPERE: 5A SMPS | VOLTAGE: 12V
SIZE: 170(L)*53(B)*18(H)
WARRANTY: 2 YEARS
MRP: ₹ XXXX /-

282



US9100 | 12V ECO SMPS

100W

AMPERE: 8.3A SMPS | VOLTAGE: 12V
SIZE: 195(L)*53(B)*18(H)
WARRANTY: 2 YEARS
MRP: ₹ XXXX /-

283



US9120 | 12V ECO SMPS

120W

AMPERE: 10A SMPS | VOLTAGE: 12V
SIZE: 226(L)*53(B)*18(H)
WARRANTY: 2 YEARS
MRP: ₹ XXXX /-

284



US9150 | 12V ECO SMPS

150W

AMPERE: 12.5A SMPS | VOLTAGE: 12V
SIZE: 250(L)*53(B)*22(H)
WARRANTY: 2 YEARS
MRP: ₹ XXXX /-

285



**US9200 | 12V ECO SMPS
200W**

AMPERE: 16.5A SMPS | VOLTAGE: 12V
SIZE: 308(L)*53(B)*22(H)
WARRANTY: 2 YEARS
MRP: ₹ XXXX /-

286



**US9300 | 12V ECO SMPS
300W**

AMPERE: 25A SMPS | VOLTAGE: 12V
SIZE: 308(L)*53(B)*22(H)
WARRANTY: 2 YEARS
MRP: ₹ XXXX /-

12V PRO SLIM SMPS

287



**PS4060 | 12V PRO SMPS
60W**

AMPERE: 5A SMPS | VOLTAGE: 12V
SIZE: 140(L)*35(B)*24(H)
WARRANTY: 2 YEARS
MRP: ₹ XXXX /-

288



**PS4100 | 12V PRO SMPS
100W**

AMPERE: 8.3A SMPS | VOLTAGE: 12V
SIZE: 180(L)*50(B)*25(H)
WARRANTY: 2 YEARS
MRP: ₹ XXXX /-

289



**PS200 | 12V PRO SMPS
200W**

AMPERE: 16.5A SMPS | VOLTAGE: 12V
SIZE: 214(L)*50(B)*25(H)
WARRANTY: 2 YEARS
MRP: ₹ XXXX /-

24V SLEEK SMART SMPS

290



**SL5061 | 24V SMPS
60W**

AMPERE: 2.5A SMPS | VOLTAGE: 12V
SIZE: 114(L)*49.5(B)*24(H)
WARRANTY: 2 YEARS
MRP: ₹ XXXX /-

291



**SL5121 | 24V SMPS
120W**

AMPERE: 5A SMPS | VOLTAGE: 12V
SIZE: 138(L)*50(B)*24(H)
WARRANTY: 2 YEARS
MRP: ₹ XXXX /-

292



**PSL5201 | 24V SMPS
200W**

AMPERE: 8.3A SMPS | VOLTAGE: 12V
SIZE: 178(L)*50(B)*24(H)
WARRANTY: 2 YEARS
MRP: ₹ XXXX /-

293



**SL5301 | 24V SMPS
300W**

AMPERE: 12.5A SMPS | VOLTAGE: 12V
SIZE: 205(L)*50(B)*24(H)
WARRANTY: 2 YEARS
MRP: ₹ XXXX /-

294

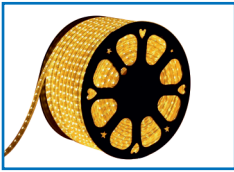


**SL5401 | 24V SMPS
400W**

AMPERE: 2.5A SMPS | VOLTAGE: 12V
SIZE: 205(L)*50(B)*24(H)
WARRANTY: 2 YEARS
MRP: ₹ XXXX /-

ROPE LIGHT

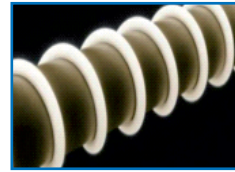
295



**LPRP001 (8W/METER) | 220V
120 LED ROPE LIGHT**

BODY SIZE (MM): 12(W)* 8(H) | LENGTH : 50M
IP RATING : IP65
CCT: 3K/4K/6.5K/RED/GREEN/BLUE/AMBER
WARRANTY: 1 YEARS
MRP: ₹ XXXX /-

296



**LPRP002 (8W/METER) | 220V
COB NEON FLEX ROPE LIGHT**

BODY SIZE (MM): 30(L)* 12(W)* 10(H)
IP RATING : IP65
CCT: 3K/4K
WARRANTY: 1 YEARS
MRP: ₹ XXXX /-

CONTROLLERS FOR LED STRIPS

297



**LPRGBAC001 | DC 12V / 24V
RGB CONTROLLER + REMOTE**

OUTPUT VOLTAGE : 3 CHANNEL X 10A
VOLTAGE: 12V / 24V
SIZE: XXXX | WARRANTY: 2 YEARS
MRP: ₹ XXXX /-

298



**LPRGBAC002 | DC 12V / 24V
RGB CONTROLLER (TIGIDIGI)**

OUTPUT VOLTAGE : XXXX
VOLTAGE: 12V / 24V
SIZE: XXXX | WARRANTY: 2 YEARS
MRP: ₹ XXXX /-

299



**LPCTAC001 | DC 12V / 24V
CCT TUNEABLE (2700K - 6000K)
CONTROLLER**

OUTPUT VOLTAGE : 2 CHANNEL X 10A
VOLTAGE: 12V / 24V
SIZE: XXXX | WARRANTY: 2 YEARS
MRP: ₹ XXXX /-
3 CHANNEL

300



**LPCTAC002 | DC 12V / 24V
CCT TUNEABLE (2700K - 6000K)
CONTROLLER (TIGIDIGI) 10A**

OUTPUT VOLTAGE : XXXX
VOLTAGE: 12V / 24V
SIZE: XXXX | WARRANTY: 2 YEARS
MRP: ₹ XXXX /-
3 CHANNEL

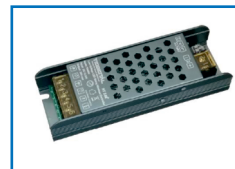
301



**LPCTAC003 | DC 12V / 24V
CCT TUNEABLE (2700K - 6000K)
CONTROLLER (TIGIDIGI) 20A**

OUTPUT VOLTAGE : XXXX
VOLTAGE: 12V / 24V
SIZE: XXXX | WARRANTY: 2 YEARS
MRP: ₹ XXXX /-
3 CHANNEL

302



**LPCTRGBAC001 | DC 12V / 24V
CCT TUNEABLE + RGB
CONTROLLER (TIGIDIGI) 20A**

OUTPUT VOLTAGE : XXXX
VOLTAGE: 12V / 24V
SIZE: XXXX | WARRANTY: 2 YEARS
MRP: ₹ XXXX /-
5 CHANNEL

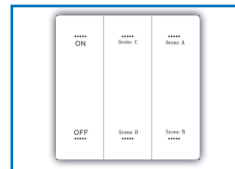
303



**LPRFIAC001
COMMON REMOTE FOR TIGIDIGI
CONTROLLERS**

SIZE: XXXX
MRP: ₹ XXXX /-
PRODUCT NOT COVERED UNDER WARRANTY

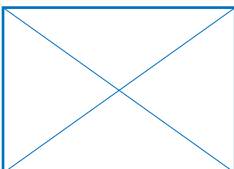
304



**LPRFIAC002
SCENE MODE CONTROLLER FOR
TIGIDIGI DRIVERS / CONTROLLERS**

SIZE: XXXX
MRP: ₹ XXXX /-
PRODUCT NOT COVERED UNDER WARRANTY

305



**LPWIFIMESH
WIFI MESH FOR TIGIDIGI
CONTROLLERS & BT DRIVERS**

SIZE: XXXX
MRP: ₹ XXXX /-
PRODUCT NOT COVERED UNDER WARRANTY

306

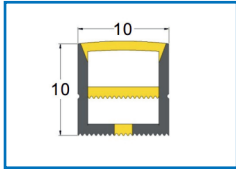


**LPRFIAC003
ON OFF SWITCH THROUGH TIGIDIGI
CONTROLLERS / REMOTE**

SIZE: 41(L)*43(B)*20(H)
MRP: ₹ XXXX /-
PRODUCT NOT COVERED UNDER WARRANTY

SILICONE FLEX (EMPTY)

307

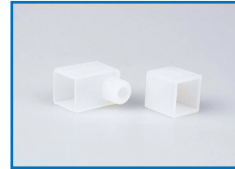


LPRP001

SILICONE FLEX (10MM)

BODY SIZE (MM): 10(B)* 10(H)
IP RATING : IP65 | PCB WIDTH: 5-8MM
LENGTH: 100 METRE
MRP: ₹ XXXX /-
*MAX W / M - 10W

308



LPEFLAC001

ENDCAP (10MM)

MRP: ₹ XXXX /-

309

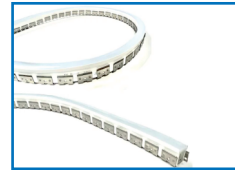


LPEFLAC002

MOUNTING CLAMP (10MM)

MRP: ₹ XXXX /-

310

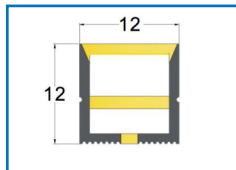


LPEFL1010MESH

STEEL MESH (10MM)

BODY SIZE (MM): 10(B)* 10(H)
LENGTH: 50 METRE
MRP: ₹ XXXX /-

311

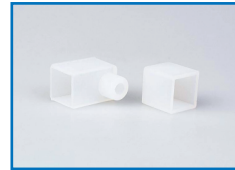


LPEFL1212

SILICONE FLEX (12MM)

BODY SIZE (MM): 12(B)* 12(H)
IP RATING : IP65 | PCB WIDTH: 8-12MM
LENGTH: 100 METRE
MRP: ₹ XXXX /-
*MAX W / M - 10W

312



LPEFLAC003

ENDCAP (12MM)

MRP: ₹ XXXX /-

313

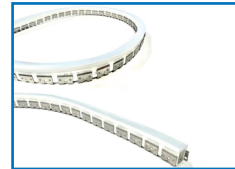


LPEFLAC004

MOUNTING CLAMP (12MM)

MRP: ₹ XXXX /-

314

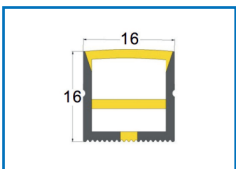


LPEFL1212MESH

STEEL MESH (12MM)

BODY SIZE (MM): 12(B)* 12(H)
LENGTH: 50 METRE
MRP: ₹ XXXX /-

315

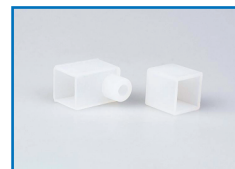


LPEFL1616

(16MM FLEX)

BODY SIZE (MM): 16(B)* 16(H)
IP RATING : IP65 | PCB WIDTH: 10-12MM
LENGTH: 100 METRE
MRP: ₹ XXXX /-
*MAX W / M - 10W

316



LPEFLAC005

ENDCAP (16MM)

MRP: ₹ XXXX /-

317

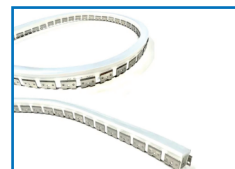


LPEFLAC006

MOUNTING CLAMP (16MM)

MRP: ₹ XXXX /-

318

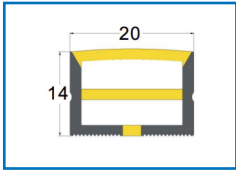


LPEFL1616MESH

STEEL MESH (16MM)

BODY SIZE (MM): 16(B)* 16(H)
LENGTH: 50 METRE
MRP: ₹ XXXX /-

319

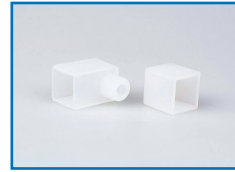


LPEFL2014

(20MM FLEX)

BODY SIZE (MM):20(B)* 14(H)
IP RATING : IP65 | PCB WIDTH: 10-12MM
LENGTH: 100 METRE
MRP: ₹ XXXX /-
*MAX W / M - 15W

320



LPEFLAC007

ENDCAP (16MM)

MRP: ₹ XXXX /-

321



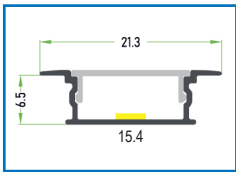
LPEFLAC008

MOUNTING CLAMP (20MM)

MRP: ₹ XXXX /-

ALUMINIUM PROFILES (EMPTY)

322

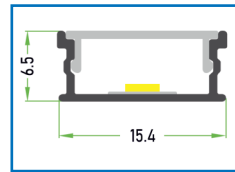


A001 - 16MM

CONCEALED / RECESSED

CUTOUT (MM):15.4(B)* 6.5(H)
TOP SIZE (MM): 21.3(B)
PCB WIDTH: 10MM
STD. LENGTH: 2 METRE
MRP: ₹ XXXX /-

323

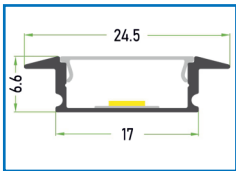


A002 - 16MM

SURFACE

BODY SIZE (MM):15.4(B)* 6.5(H)
PCB WIDTH: 10-12MM
STD. LENGTH: 2 METRE
MRP: ₹ XXXX /-

324



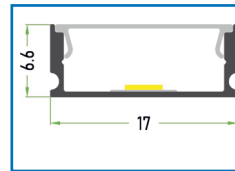
A001 - 17MM HEAVY

CONCEALED / RECESSED

CUTOUT (MM):17(B)* 6.6(H)
TOP SIZE (MM): 24.5(B)
PCB WIDTH: 10MM
STD. LENGTH: 2 METRE
MRP: ₹ XXXX /-

*85 GMS/M

325



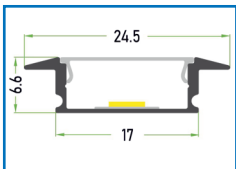
A002 - 17MM HEAVY

SURFACE

BODY SIZE (MM): 17(B)* 6.6(H)
PCB WIDTH: 10MM
STD. LENGTH: 2 METRE
MRP: ₹ XXXX /-

*80 GMS/M

326



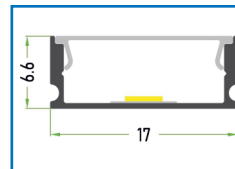
A001 - 17MM SUPER HEAVY

CONCEALED / RECESSED

CUTOUT (MM):17.5(B)* 6.65(H)
TOP SIZE (MM): 23(B)
PCB WIDTH: 10MM
STD. LENGTH: 2 METRE
MRP: ₹ XXXX /-

*125 GMS/M

327



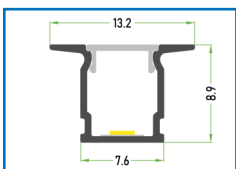
A002 - 17MM SUPER HEAVY

SURFACE

BODY SIZE (MM): 17.5(B)* 6.65(H)
PCB WIDTH: 10MM
STD. LENGTH: 2 METRE
MRP: ₹ XXXX /-

*115 GMS/M

328

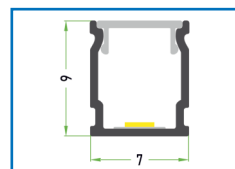


A003 - 8MM

CONCEALED / RECESSED

CUTOUT (MM):7.6(B)* 8.9(H)
TOP SIZE (MM): 13.2(B)
PCB WIDTH: 5MM
STD. LENGTH: 2 METRE
MRP: ₹ XXXX /-

329

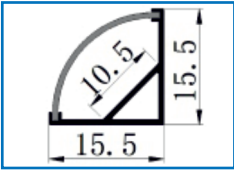


A004 - 8MM

SURFACE

BODY SIZE (MM):7(B)* 9(H)
PCB WIDTH: 5MM
STD. LENGTH: 2 METRE
MRP: ₹ XXXX /-

330

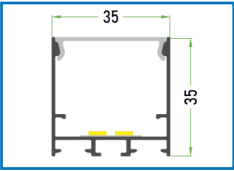


A005 - 15X15 CORNER

SURFACE

BODY SIZE (MM): 15.5(B)* 15.5(H)
PCB WIDTH: 10MM
STD. LENGTH: 2 METRE
MRP: ₹ XXXX /-

332

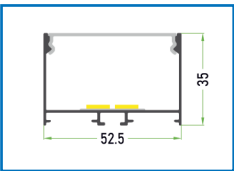


A007 - 35X35

SURFACE

BODY SIZE (MM): 35(B)* 35(H)
PCB WIDTH: 30MM
STD. LENGTH: 2 METRE
MRP: ₹ XXXX /-

334

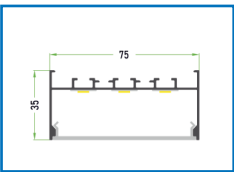


A009 - 52.5X35

SURFACE

BODY SIZE (MM): 52.5(B)* 35(H)
PCB WIDTH: 40MM
STD. LENGTH: 2 METRE
MRP: ₹ XXXX /-

336

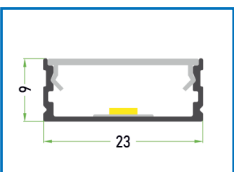


A011 - 75X35

SURFACE

BODY SIZE (MM): 75(B)* 35(H)
PCB WIDTH: 60MM
STD. LENGTH: 2 METRE
MRP: ₹ XXXX /-

338

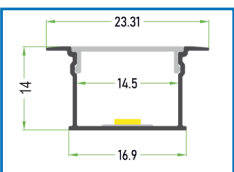


A015 - 23X09

SURFACE

BODY SIZE (MM): 23(B)* 9(H)
PCB WIDTH: 20MM
STD. LENGTH: 2 METRE
MRP: ₹ XXXX /-

340

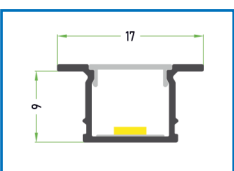


A017 - 17X14

CONCEALED / RECESSED

CUTOUT (MM): 16.9(B)* 14(H)
TOP SIZE (MM): 23.31(B)
PCB WIDTH: 10-12MM
STD. LENGTH: 2 METRE
MRP: ₹ XXXX /-

342

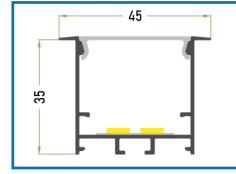


A020 - 11X09

CONCEALED / RECESSED

CUTOUT (MM): 11(B)* 9(H)
TOP SIZE (MM): 17(B)
PCB WIDTH: 8MM
STD. LENGTH: 2 METRE
MRP: ₹ XXXX /-

331

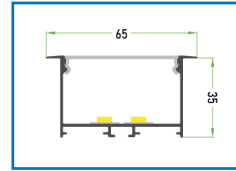


A006 - 35X35

CONCEALED / RECESSED

CUTOUT (MM): 35(B)* 35(H)
TOP SIZE (MM): 45(B)
PCB WIDTH: 30MM
STD. LENGTH: 2 METRE
MRP: ₹ XXXX /-

333

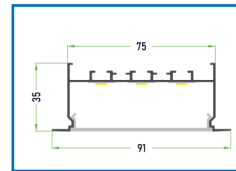


A008 - 52.5X35

CONCEALED / RECESSED

CUTOUT (MM): 52.5(B)* 35(H)
TOP SIZE (MM): 65(B)
PCB WIDTH: 40MM
STD. LENGTH: 2 METRE
MRP: ₹ XXXX /-

335

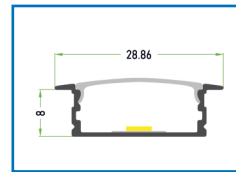


A010 - 75X35

CONCEALED / RECESSED

CUTOUT (MM): 75(B)* 35(H)
TOP SIZE (MM): 91(B)
PCB WIDTH: 60MM
STD. LENGTH: 2 METRE
MRP: ₹ XXXX /-

337

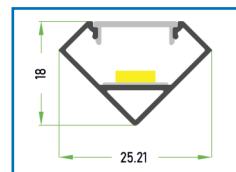


A014 - 23X09

CONCEALED / RECESSED

CUTOUT (MM): 23(B)* 8(H)
TOP SIZE (MM): 28.9(B)
PCB WIDTH: 20MM
STD. LENGTH: 2 METRE
MRP: ₹ XXXX /-

339

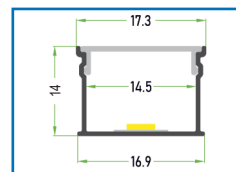


A016 - 18X18 CORNER

SURFACE

BODY SIZE (MM): 18(B)* 18(H)
PCB WIDTH: 10MM
STD. LENGTH: 2 METRE
MRP: ₹ XXXX /-

341

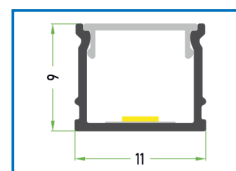


A018 - 17X14

SURFACE

BODY SIZE (MM): 17.3(B)* 14(H)
PCB WIDTH: 10-12MM
STD. LENGTH: 2 METRE
MRP: ₹ XXXX /-

343

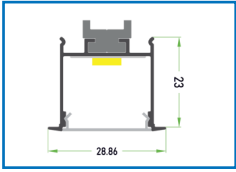


A021 - 11X09

SURFACE

BODY SIZE (MM): 11(B)* 9(H)
PCB WIDTH: 8MM
STD. LENGTH: 2 METRE
MRP: ₹ XXXX /-

344

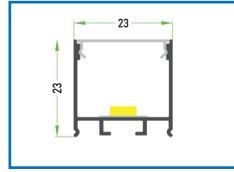


A022 - 23X23

CONCEALED / RECESSED

CUTOUT (MM): 23(B)* 23(H)
TOP SIZE (MM): 28.9(B)
PCB WIDTH: 20MM
STD. LENGTH: 2 METRE
MRP: ₹ XXXX /-

345

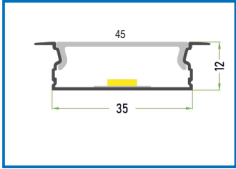


A023 - 23X23

SURFACE

BODY SIZE (MM): 23(B)* 23(H)
PCB WIDTH: 20MM
STD. LENGTH: 2 METRE
MRP: ₹ XXXX /-

346

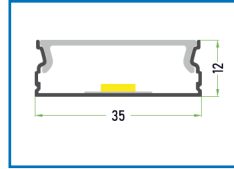


A024 - 35X12

CONCEALED / RECESSED

CUTOUT (MM): 35(B)* 12(H)
TOP SIZE (MM): 45(B)
PCB WIDTH: 28MM
STD. LENGTH: 2 METRE
MRP: ₹ XXXX /-

347

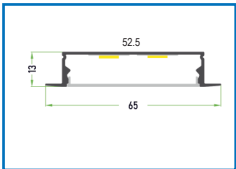


A025 - 35X12

SURFACE

BODY SIZE (MM): 35(B)* 12(H)
PCB WIDTH: 28MM
STD. LENGTH: 2 METRE
MRP: ₹ XXXX /-

348

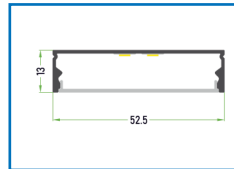


A028 - 52.5X12

CONCEALED / RECESSED

CUTOUT (MM): 52.5(B)* 12(H)
TOP SIZE (MM): 65(B)
PCB WIDTH: 40MM
STD. LENGTH: 2 METRE
MRP: ₹ XXXX /-

349

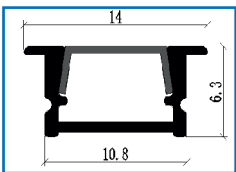


A029 - 52.5X12

SURFACE

BODY SIZE (MM): 52.5(B)* 12(H)
PCB WIDTH: 40MM
STD. LENGTH: 2 METRE
MRP: ₹ XXXX /-

350

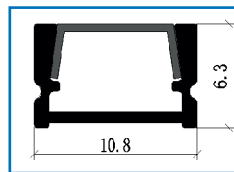


A034 - 11X06

CONCEALED / RECESSED

CUTOUT (MM): 10.8(B)* 6.3(H)
TOP SIZE (MM): 14(B)
PCB WIDTH: 8MM
STD. LENGTH: 2 METRE
MRP: ₹ XXXX /-

351

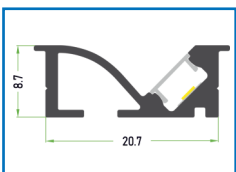


A035 - 11X06

SURFACE

BODY SIZE (MM): 10.8(B)* 6.3(H)
PCB WIDTH: 8MM
STD. LENGTH: 2 METRE
MRP: ₹ XXXX /-

352

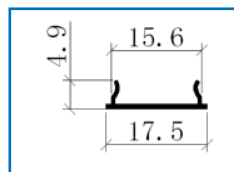


A036 - 20X09 FURNITURE

CONCEALED / RECESSED

CUTOUT (MM): 20.7(B)* 8.7(H)
TOP SIZE (MM): 24(B)
PCB WIDTH: 5MM | FINISH: ANODIZED / BLACK
STD. LENGTH: 2 METRE
MRP: ₹ XXXX /-

353

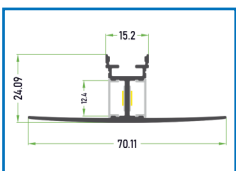


BENDABLE

SURFACE

BODY SIZE (MM): 17.5(B)* 5(H)
PCB WIDTH: 10MM
STD. LENGTH: 2 METRE
MRP: ₹ XXXX /-

354

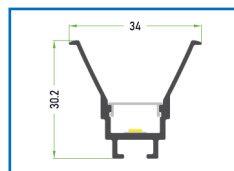


A037 - UP DOWN

WALL MOUNTED

BODY SIZE (MM): 24(D)* 70(H)
PCB WIDTH: 2*10MM | FINISH: ANODIZED
STD. LENGTH: 2 METRE
MRP: ₹ XXXX /-

355

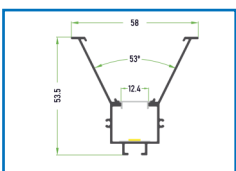


A038 - SMALL Y PROFILE

CONCEALED / RECESSED

CUTOUT (MM): 30(B)* 30.2(H)
TOP SIZE (MM): 34(B)
PCB WIDTH: 10MM | FINISH: ANODIZED
STD. LENGTH: 2 METRE
MRP: ₹ XXXX /-

356



A039 - BIG Y PROFILE

CONCEALED / RECESSED

CUTOUT (MM): 48(B)* 53.5(H)
TOP SIZE (MM): 58(B)
PCB WIDTH: 10MM | FINISH: ANODIZED
STD. LENGTH: 2 METRE
MRP: ₹ XXXX /-

357



A040 - 8MM GLASS PROFILE

GLASS MOUNT

PCB WIDTH: 5MM | FINISH: ANODIZED
STD. LENGTH: 1.83 METRE
MRP: ₹ XXXX /-

358



A041 - 10MM PROFILE

GLASS MOUNT

PCB WIDTH: 8MM | FINISH: ANODIZED
STD. LENGTH: 1.83 METRE
MRP: ₹ XXXX /-

359

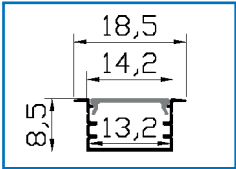


A042 - 12MM GLASS PROFILE

GLASS MOUNT

PCB WIDTH: 10MM | FINISH: ANODIZED
STD. LENGTH: 1.83 METRE
MRP: ₹ XXXX /-

360

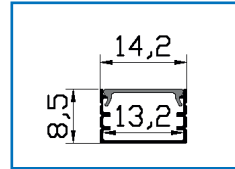


A051 - 14X09

CONCEALED / RECESSED

CUTOUT (MM): 14.2(B)* 8.5(H)
TOP SIZE (MM): 18.5(B)
PCB WIDTH: 10MM
STD. LENGTH: 2 METRE
MRP: ₹ XXXX /-

361

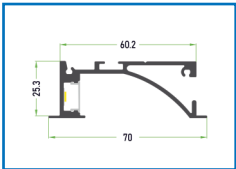


A052 - 14X09

SURFACE

BODY SIZE (MM): 14.2(B)* 8.5(H)
PCB WIDTH: 10MM
STD. LENGTH: 2 METRE
MRP: ₹ XXXX /-

362

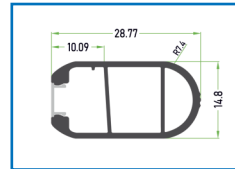


A045 - 60X25

RECESSED - SKIRTING

CUTOUT (MM): 60.2(B)* 25.3(H)
TOP SIZE (MM): 70(B)
PCB WIDTH: 10MM
STD. LENGTH: 2 METRE
MRP: ₹ XXXX /-

363



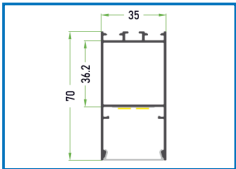
A046 - HANGER ROD

SURFACE

BODY SIZE (MM): 14.8(B)* 29(H)
PCB WIDTH: 5MM
STD. LENGTH: 2 METRE
MRP: ₹ XXXX /-

HANGING PROFILE LIGHTS (EMPTY)

364



A012 - 35X70

HANGING

BODY SIZE (MM): 35(B)* 70(H)
PCB WIDTH: 25MM
STD. LENGTH (M): 1.2/2.4/3.6
MRP: ₹ XXXX /-

365



A013 - 50X70

HANGING

BODY SIZE (MM): 50(B)* 70(H)
PCB WIDTH: 40MM
STD. LENGTH (M): 1.2/2.4/3.6
MRP: ₹ XXXX /-

HANGING PROFILE LIGHTS (COMPLETE)

366



A012 - 35X70 (40W/80W/120W)

HANGING

BODY SIZE (MM): 35(B)* 70(H)
PCB WIDTH: 25MM | LED: BRIDGELUX
CCT: 3K/4K/6K | DRIVER: FULHAM/BAG
STD. LENGTH (M): 1.2/2.4/3.6
MRP: ₹ XXXX /-

367



A013 - 50X70 (40W/80W/120W)

HANGING

BODY SIZE (MM): 50(B)* 70(H)
PCB WIDTH: 30MM | LED: BRIDGELUX
CCT: 3K/4K/6K | DRIVER: FULHAM/BAG
STD. LENGTH (M): 1.2/2.4/3.6
MRP: ₹ XXXX /-

368



LPOF003 - 35X66 (45W)

LAZER HANGING PROFILE

BODY SIZE (MM): 35(B)* 66(H)
PCB WIDTH: 25MM | LED: BRIDGELUX
CCT: 4K | DRIVER: LUMEN PLUS
BODY COLOUR: BLACK | STD. LENGTH (M): 1.2
MRP: ₹ XXXX /-

CURTAIN GRAZER PROFILES

369



**A043 - 30°
CURTAIN GRAZER**

BODY SIZE (MM): 17(B)* 23.8(H)
PCB WIDTH: 10MM
STD. LENGTH: 2 METRE
MRP: ₹ XXXX /-

370



**A044 - MULTI - 10°/30°/60°/90°
CURTAIN GRAZER**

BODY SIZE (MM): 20(B)* 23.8(H)
PCB WIDTH: 10MM
STD. LENGTH: 2 METRE
MRP: ₹ XXXX /-

FLOOD LIGHTS

371



**LPFLOO1 (50W) APEX
FLOOD LIGHT**

BODY SIZE(MM): 205*175*40
SURGE PROTECTION: 6KV | IP RATING: IP66
BODY WEIGHT: 1025 GRAMS
LED: EPISTAR | DRIVER: LUMEN PLUS
MRP: ₹ XXXX /-

372



**LPFLOO1 (100W) APEX
FLOOD LIGHT**

BODY SIZE(MM): 260*220*40
SURGE PROTECTION: 6KV | IP RATING: IP66
BODY WEIGHT: 1620 GRAMS
LED: EPISTAR | DRIVER: LUMEN PLUS
MRP: ₹ XXXX /-

373



**LPFLOO1 (150W) APEX
FLOOD LIGHT**

BODY SIZE(MM): 290*355*60
SURGE PROTECTION: 6KV | IP RATING: IP66
BODY WEIGHT: XXXX GRAMS
LED: EPISTAR | DRIVER: LUMEN PLUS
MRP: ₹ XXXX /-

374



**LPFLOO1 (200W) APEX
FLOOD LIGHT**

BODY SIZE(MM): 320*425*60
SURGE PROTECTION: 6KV | IP RATING: IP66
BODY WEIGHT: XXXX GRAMS
LED: EPISTAR | DRIVER: LUMEN PLUS
MRP: ₹ XXXX /-

HIGHBAY LIGHTS

375



**LPHB001 (100W)
HIGHBAY LIGHT**

BODY SIZE(MM): XXXX
SURGE PROTECTION: 6KV | IP RATING: IP66
BODY WEIGHT: 1025 GRAMS
LED: EPISTAR | DRIVER: LUMEN PLUS
MRP: ₹ XXXX /-

376



**LPHB001 (150W)
HIGHBAY LIGHT**

BODY SIZE(MM): XXXX
SURGE PROTECTION: 6KV | IP RATING: IP66
BODY WEIGHT: 1620 GRAMS
LED: EPISTAR | DRIVER: LUMEN PLUS
MRP: ₹ XXXX /-

377



**LPFLOO1 (200W)
HIGHBAY LIGHT**

BODY SIZE(MM): XXXX
SURGE PROTECTION: 6KV | IP RATING: IP66
BODY WEIGHT: XXXX GRAMS
LED: EPISTAR | DRIVER: LUMEN PLUS
MRP: ₹ XXXX /-

SENSORS

MICROWAVE MOTION SENSOR

378



LPMS001

CONCEALED

DETECTION DISTANCE : 1-8M (RADIUS)
INSTALLING HEIGHT: 1.5-3.5M
RATED LOAD: 300W
WARRANTY: 1 YEAR
MRP: ₹ XXXX /-

379



LPMS002

SURFACE

DETECTION DISTANCE : 1-8M (RADIUS)
INSTALLING HEIGHT: 2.2-4M
RATED LOAD: 300W
WARRANTY: 1 YEAR
MRP: ₹ XXXX /-

380



LPMS003

HIDDEN

DETECTION DISTANCE : 5-15M (RADIUS)
INSTALLING HEIGHT: 1.5-3.5M (WALL)
2-8M (CEILING)
RATED LOAD: 300W
WARRANTY: 1 YEAR
MRP: ₹ XXXX /-

PIR MOTION SENSORS

381



LPPIR001

CONCEALED

DETECTION DISTANCE : 6M (RADIUS) (<24° C)
INSTALLING HEIGHT: 2.2-4M
RATED LOAD: 300W
WARRANTY: 1 YEAR
MRP: ₹ XXXX /-

382



LPIR002

SURFACE

DETECTION DISTANCE : 6M (RADIUS) (<24° C)
INSTALLING HEIGHT: 2.2-4M
RATED LOAD: 300W
WARRANTY: 1 YEAR
MRP: ₹ XXXX /-

WARDROBE SENSORS

383



LPWBS001 - SINGLE DOOR

CONCEALED

INPUT VOLTAGE : 12V/24V
RATED LOAD: 60W
WARRANTY: 1 YEAR
MRP: ₹ XXXX /-

384



LPWBS002 - DOUBLE DOOR

CONCEALED

INPUT VOLTAGE : 12V/24V
RATED LOAD: 60W
WARRANTY: 1 YEAR
MRP: ₹ XXXX /-

STAIRCASE SENSORS

385



LPSCS001 - MICROWAVE

CONCEALED

INPUT VOLTAGE : 12V/24V
RATED LOAD: 1A X 32 STEPS
WARRANTY: 1 YEAR
MRP: ₹ XXXX /-

386



LPSCS002 - PHOTOELECTRIC

CONCEALED

INPUT VOLTAGE : 12V/24V
RATED LOAD: 1A X 32 STEPS
WARRANTY: 1 YEAR
MRP: ₹ XXXX /-



Manufactured by:

Lux & Lumens

3rd Floor, Shop No. 221, Jangid Complex, New Aatish
Market, Jaipur 302020

Marketed by:

Lumen Era

Ground Floor, Shop No. 221, Jangid Complex, New Aatish
Market, Jaipur 302020

  / Lumenplus.in